



PIKSEL

Penelitian Ilmu Komputer
Sistem *Embedded & Logic*

Vol. 10 No.1 Maret 2022

*Smart Tools, Online System, and New Computation Methods
for Supporting Business in the Digital Era*

Department of Computer Engineering

Universitas Islam "45" Bekasi



P-ISSN 2303-3304
E-ISSN 2620-3553

Penelitian Ilmu Komputer, Sistem Embedded & Logic | PIKSEL



[Home](#) [Current](#) [Archives](#) [Editorial Team](#) [Reviewer](#) [Announcements](#) [About](#)

Editorial Team

EDITOR IN CHIEF

Rahmadya Trias Handayanto, S.T., M.Kom., Ph.D., (*Scopus ID: [55014574400](#), [Google Scholar](#) Universitas Islam 45*)

DEPUTY EDITOR IN CHIEF

Inna Ekawati, S.T., MMSI, (*Scopus ID: [57221501629](#), [Google Scholar](#) Universitas Islam 45*)

BOARD OF EDITORS

Maimunah, S.Si., M.Kom., (*Scopus ID: [57215528459](#), [Google Scholar](#) Universitas Muhammadiyah Magelang*)

Deshinta Arrova Dewi, (*Scopus ID: [55012068200](#), INTI International University, **Malaysia***)

Retno Nugroho Whidhiasih, S.Kom., M.Kom., (*Scopus ID: [55613478500](#), [Google Scholar](#) Universitas Islam 45*)

Endang Retnoningsih, S.Kom., M.Kom., (*Scopus ID: [57215526966](#), [Google Scholar](#) Institut Bisnis Muhammadiyah Bekasi*)

Fata Nidaul Khasanah, S.Kom., M.Eng., (*Scopus ID: [57189353040](#), [Google Scholar](#) Universitas Bhayangkara Jakarta Raya*)

Yopi Handrianto, S.Kom., M.Kom., (*Scopus ID: [57215294416](#), [Google Scholar](#) Universitas Bina Sarana Informatika*)

Richard, S.Kom., M.M., (*Scopus ID: [56638189100](#), [Google Scholar](#) Universitas Bina Nusantara*)

Ben Rahman, B.Sc., S.Kom., M.MSI., (*Scopus ID: [57215525641](#), [Google Scholar](#) Universitas Nasional*)

TECHNICAL EDITOR

Irwan Sukandar

Muryanti

Sumarlin

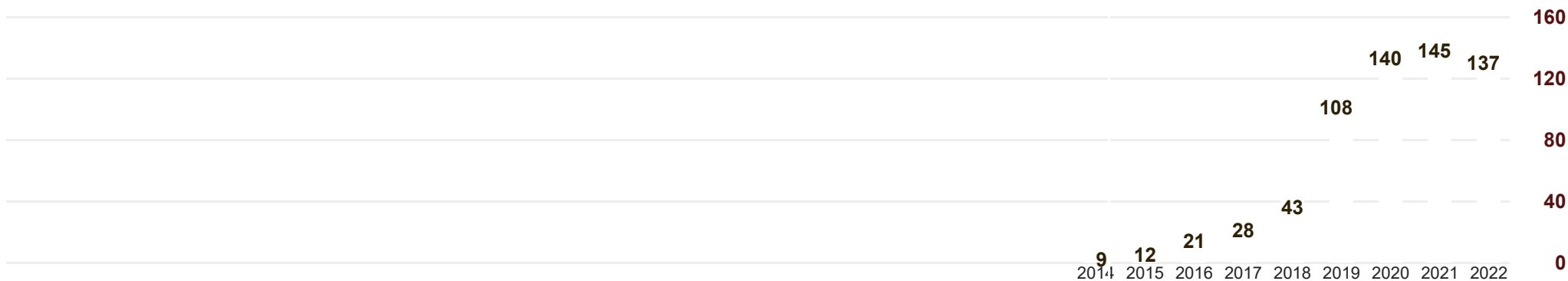
Deni Herdiana

Puput Putrianika

Editor Certificates

1. Editor PIKSEL Vol 8 No 1 (March 2020) [Download](#)
2. Editor PIKSEL Vol 8 No 2 (September 2020) [Download](#)
3. Editor PIKSEL Vol 9 No 1 (March 2021) [Download](#)
4. Editor PIKSEL Vol 9 No 2 (September 2021) [Download](#)
5. Editor PIKSEL Vol 10 No 1 (March 2022) [Download](#)

Citations according to [Google Scholar](#): 649 (h-index: 11)



Citation Statistic by [Author My ID](#)



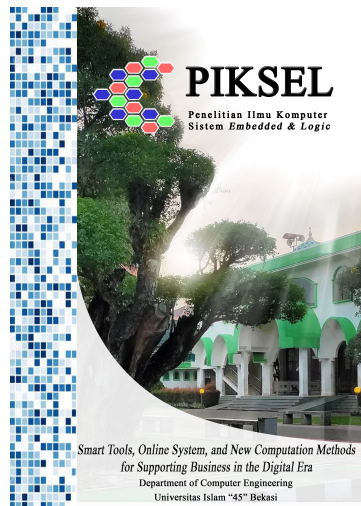
P-ISSN 2303-3304
E-ISSN 2620-3553

Penelitian Ilmu Komputer, Sistem Embedded & Logic | PIKSEL



[Home](#) [Current](#) [Archives](#) [Editorial Team](#) [Reviewer](#) [Announcements](#) [About](#)

[Home](#) / [Archives](#) / Vol 10 No 1 (2022): March 2022



PIKSEL : Penelitian Ilmu Komputer Sistem Embedded and Logic is a journal published by Research and Community Service Center (LPPM) of Universitas Islam 45 Bekasi. This journal was originally intended to accommodate scientific papers from computer science and informatics research. This journal was published for the first time in 2013 with two numbers annually and has been available online since 2018. PIKSEL status is accredited by the directorate general of research strengthening and development no. 28/E/KPT/2019 with Indonesian Scientific Index (SINTA) journal-level of S5, starting from volume 6(1) 2018 to volume 10(1) 2022. The topics in the PIKSEL journal are computer science, embedded system, software engineering, information system, computer network, digital image processing, artificial and computational intelligence, and machine learning. [p-ISSN: 2303-3304](#), [e-ISSN: 2620-3553](#).

DOI: <https://doi.org/10.33558/piksel.v10i1>

Published: 2022-03-26

Full Issue

[Front Cover - Vol 10 No 1 March](#)[Back Cover - Vol 10 No 1 March](#)

Articles

Design of Web-Based Helpdesk Ticketing System at PT DENSO Indonesia

Eduard Pangestu Wonohardjo, Annan Hutomo Putra, Emny Harna Yossy

1 - 18

[PDF](#)DOI : <https://doi.org/10.33558/piksel.v10i1.3183>

Abstract View: 119, PDF Download: 10

Evaluation of ERP Oracle Netsuite System for Purchasing Management Module at PT PQR using UTAUT2 Method

Richard Richard, Indira Damayanti, Mutia Annisa Nabilla, Almaida Aviani

19 - 30

[PDF](#)DOI : <https://doi.org/10.33558/piksel.v10i1.3273>

Abstract View: 88, PDF Download: 12

Enhanced Face Image Super-Resolution Using Generative Adversarial Network

Bagus Hardiansyah, Elvianto Dwi Hartono


31 - 40

 PDFDOI : <https://doi.org/10.33558/piksel.v10i1.4158> Abstract View: 75,  PDF Download: 57**Web-Based Recommender System for High School Major Decision Using Forward Chaining** Ira Wardani, Prima Dina Atika, Herlawati Herlawati

41 - 54

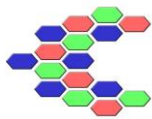
 PDFDOI : <https://doi.org/10.33558/piksel.v10i1.4402> Abstract View: 122,  PDF Download: 49**Team-Teaching-Based Course Scheduling Using Genetic Algorithm** Rafika Sari, Khairunnisa Fadhillah Ramdhanian, Rakhmat Purnomo

55 - 66

 PDFDOI : <https://doi.org/10.33558/piksel.v10i1.4416> Abstract View: 101,  PDF Download: 60**Decision Tree-Based Weather Prediction** Achmad Noeman, Dwipa Handayani, Abrar Hiswara

67 - 78

 PDFDOI : <https://doi.org/10.33558/piksel.v10i1.4418> Abstract View: 86,  PDF Download: 77



Team-Teaching-Based Course Scheduling Using Genetic Algorithm

Rafika Sari ^{1,*}, Khairunnisa Fadhilla Ramdhaniana ¹, and Rakhmat Purnomo ¹

* Correspondence Author: rafika.sari@dsn.ubharajaya.ac.id

¹ Informatics Study Program, Faculty of Computer Science, Universitas Bhayangkara Jakarta Raya, Jl. Raya Perjuangan No.81 Margamulya, Bekasi utara, Bekasi, telp.(021) 88955882, e-mail: rafika.sari@dsn.ubharajaya.ac.id; rakhmat.purnomo@dsn.ubharajaya.ac.id; khairunnisa.fadhilla@dsn.ubharajaya.ac.id

Submitted : 20/01/2022
Revised : 04/02/2022
Accepted : 03/03/2022
Published : 26/03/2022

Abstract

Scheduling problems occur in various fields, e.g., education, health institutions, transportation, sports, etc. Main scheduling problems in education is course scheduling which creates schedules for students and lecturers. In this study, course scheduling allocates the lecturers in the form of team teaching and courses into the class and a certain time to even out the workload of lecturers per day and a group of students per day in one week without breaking the constraint. The method used in this research is a genetic algorithm where Universitas Bhayangkara Jakarta Raya as the case study. The genetic algorithm process is done by getting several candidate solutions that undergo a process of selection, mutation, and crossing over to produce chromosomes with the best fitness values. The objective function in this research is minimizing the average variance of the workload of lecturers and students per day in one week. The parameters used in genetic algorithm are determined based on the Design of Experiments mechanism (DOE). The optimal parameter values used to run the program are as: population size = 50, with probability of crossing over = 0.4 and probability of mutation = 0.008. The results of scheduling with genetic algorithms show that the value of the workload variance lecturers and students by considering team teaching is better than actual scheduling. The application of the genetic algorithm method results in a decrease in the standard value deviation of the workload of lecturers and a group of students in one week is 0.114 (3.68%) and 3.11 (55.7%). In addition, course scheduling uses a genetic algorithm with consider team teaching better than genetic algorithm without considering team teaching because there is no class schedule that clashes in real conditions.

Keywords: genetic algorithm, scheduling system, subject of study, team-teaching

1. Introduction

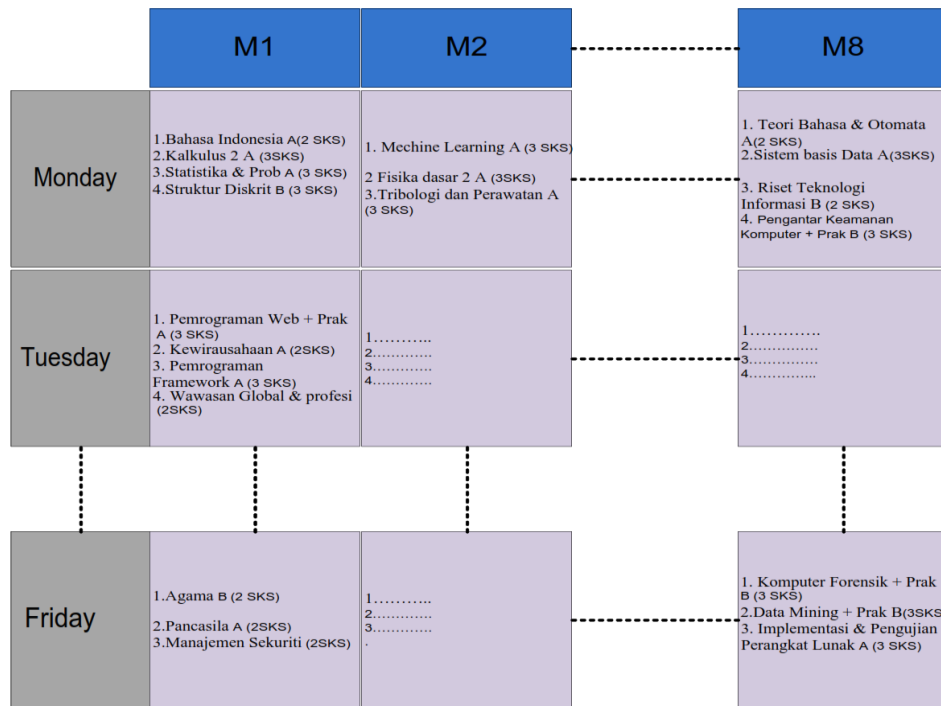
Scheduling courses is a very complex problem. The essence of course scheduling is how to schedule the course based on classes, subjects, lecturers, space and time with a number of certain limitations and conditions. Class scheduling included in the type of scheduling. Scheduling problems can be classified as NP-

Hard Problem (nondeterministic polynomial time). The NP-Hard Problem is a problem that if all alternative combinations are tried to be tested, then the time needed to find the right solution feasible of the problem will increase sharply (Birbas, 2007). Therefore, the solution optimization will be difficult to solve using conventional methods (Kano & Sakamoto, 2008).

Students and lecturers are the main components in the teaching system that must be scheduled (Chaudhuri & De, 2010). Scheduling that pays attention to students and teaching staff, such as student learning workload and teaching staff preferences will result in good scheduling. Good scheduling will improve the quality of teaching and learning. Scheduling problems Lectures at educational institutions have many variations according to the policies of educational institutions where the class schedule is used. Scheduling courses at an educational institution is used as a case study where the preparation uses a manual method that does not use an algorithm often become the NP-Hard problems. The manual method has limitations for creating scheduling that involves a lot of components in educational institutions. Scheduling using the manual method takes a long time to get a schedule that is in line with expectations. Therefore, this research aims to develop a model for scheduling courses in educational institutions including existing limitations and team-teaching implementation.

Many research on scheduling has been studied, e.g., exam and course scheduling problem in a university (Qu et al., 2006). Kano & Sakamoto (2008) completed the scheduling course by using a combination of local search and algorithms genetics to find the optimal solution to meet the soft constraints. Good scheduling is obtained of several individuals during the running process in the model. The method used in solving it is knowledge based (KB). The knowledge based method will produce a partial solution that is entered in the Genetic Algorithm (GA) model in each generation. The results of this study indicate that the model genetic algorithm with the addition of prior period/knowledge based scheduling information is better than the genetic algorithm model without the addition of prior period/knowledge based scheduling information. Gooi, et.al (2010) optimize the workloading staff by involving 250 academic staff and 400 college student. The staff in this study indicate the teaching staff who in the model are scheduled for assignments teaching. There are five types of classes in one semester that must be met in carrying out assignments teaching so that weekly scheduling becomes

feasible. The five classes are lecture, tutorial, project, design, and laboratories, whereas the constraints used in the model, namely Hard, medium, and soft constraints. Which method used to get the optimal value of this problem is Simulated Annealing (SA). M. Eley (2006) perform scheduling optimization with the aim of evening out the student learning load and distribute the test points evenly. The Max Min Ant Systems (MMAS) method is used in this study to find the optimal solution.



Source: Research Result

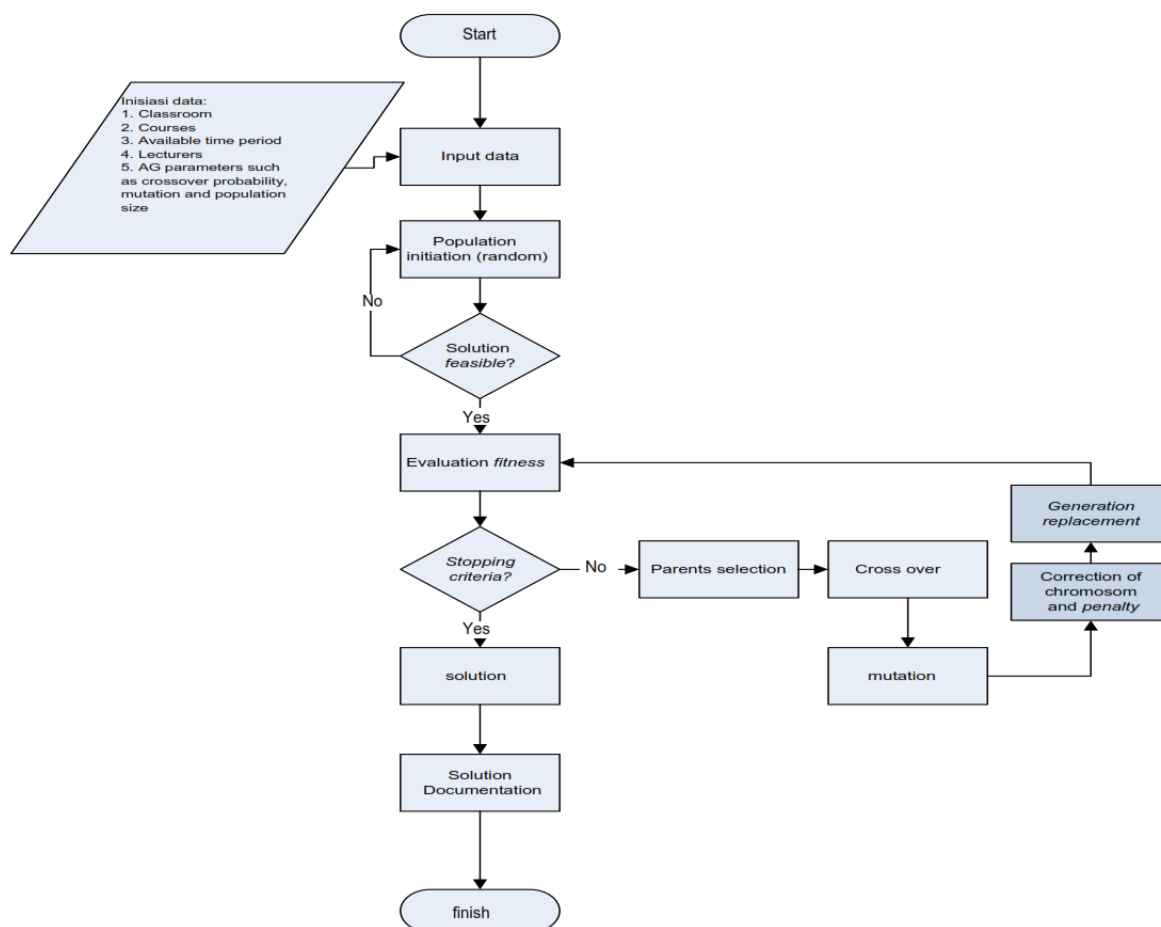
Figure 1. Illustration of the Use of Class for Courses

The results of this method are compared with several methods of Ant Colony and Ant Colony with Hill Climbing. Comparisons were made by testing on 13 different university data sets, with the results of comparisons varying across all data. Then Birbas (2007) used the integer programming method for scheduling Shift Assignment for teaching staff, which obtained a feasible teaching schedule that did not experience conflicts, and there was a schedule fit between the teaching staff and students. In addition, Darmawan & Hasibuan (2014) conducted research on course scheduling based on the distribution of the workload of lecturers and students evenly without considering team teaching. The method used to find the optimal solution of the course scheduling problem is the genetic algorithm method. The result is in the form of teaching scheduling and the distribution of the workload of teaching staff and students.

This research was conducted to obtain a schedule of courses in the Informatics field of study, Faculty of Computer Science, Universitas Bhayangkara Jakarta Raya (UBJ). The objective of this study including: i) the number of conflicting courses can be reduced, ii) the number of available lecturers can teach according to the maximum credit load, iii) the student lecture load is more evenly distributed, and iv) the use of classrooms is more optimal. The optimization method used in this study is a genetic algorithm (GA). Genetic Algorithm is one of the algorithms that can be used to solve problems on a large scale and has a high level of complexity so that it is suitable for solving the problem of scheduling courses at universities which are known to be complicated and have many variable constraints in making class schedules. The expected result of this research is an optimal course schedule.

2. Research Method

In general, the research flow chart can be seen in Figure 2.



Source: Research Result

Figure 2. Flowchart of Course Scheduling Using Genetic Algorithm

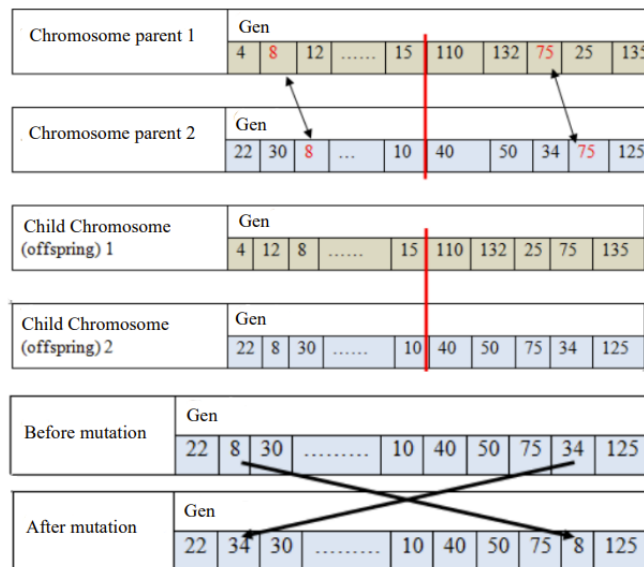
The data used to compile the class schedule is obtained from a database regarding administration of lectures in an educational institution. The data include list data room, teaching staff data for certain courses, time period data for certain subject units, data courses in a certain period of time, data on the year of class, majors, types of courses and credits for each subject studying. An illustration of the use of space for courses on a daily basis can be seen in Figure 1. The software used in this research is Matlab R2016a inside the Windows 10 operating system, for writing and building algorithm models. The method is Genetic Algorithm where this method is a heuristic method or approach that mimic the processes of natural selection and evolution from Charles Darwin.

The model of the chromosomes in the genetic algorithm is adjusted to the shape of the course schedule at the institution education, where the chromosome consists of several genes. Genes are formed is a representation of the schedule courses for certain lecturers on certain days in certain time slots, as well as intended for students of certain study programs and certain semesters. Representation of simple chromosomes in the case of akademik scheduling as shown in Figure 3. The crossover and mutation method used are one-point crossover and swap mutation, respectively, as can be seen in Figure 4.

| | | Monday | | | | | | | | | | | | | | | | |
|-------|-----|--------|-----|----|---|---|----|---|---|-------|--|--|--|----|--|---|---|---|
| | | M1 | | | | | M2 | | | | | | | M8 | | | | |
| Time | POP | 1 | 2 | 3 | 4 | 5 | 1 | 2 | 3 | | | | | | | 1 | 2 | 3 |
| 1 | | 42 | 23 | 21 | 8 | | | | | | | | | | | | | |
| 2 | | 1 | 14 | 30 | 5 | | | | | | | | | | | | | |
| | | | | | | | | | | | | | | | | | | |
| 25 | | 45 | 130 | 90 | 4 | | | | | | | | | | | | | |

Source: Darmawan & Hasibuan (2014)

Figure 3. Chromosome Representation Illustration



Source: Darmawan & Hasibuan (2014)

Figure 4. One Point Order Crossover Process and Mutation Process using the Swap Method

Parent selection is done by the roulette wheel method. In this selection method, parents are selected based on the fitness value, the better the fitness value, the more likely it is to be selected. Process parent selection begins by doing a linear fitness ranking (LFR) with the aim of increasing variation so as not to occur local optimum and further clarify the position between the chromosomes with their fitness. Linear Fitness Ranking is done after fitness is sorted from the largest to the smallest LFR formula expressed in the following equation (Russell, 2018):

$$LFR_k = F_{max} - (F_{max} - F_{min}) \times \left(\frac{n_k - 1}{n_p - 1} \right) \quad (1)$$

where

LFR_k : Linear fitness ranking

$MaxF$: Fitness maximum in one population

$MinF$: Fitness minimum in one population

k : Chromosome number

n_p : Size of the number chromosomes in one population

n_k : Index of number from 1 to n_p

The Design of Experiment (DOE) was carried out to find the genetic algorithm parameters, i.e., number of populations, crossover rate and mutation rate where the

results are as follows, respectively, 50; 0.4; and 0.008. The solution search process is carried out up to 1000 iterations, and generally it looks convergent.

3. Results and Analysis

Mathematical models are represented to describe course scheduling problems at institutions education. The mathematical model is formulated as follows:

a. Course set (j)

j = index of courses contained in the academic period offered, $j \in \{1, 2, 3, \dots, J\}$

J = the total number of courses

b. Starting time (i)

i = index of the period or time of the course being implemented, $i \in \{1, 2, 3, \dots, Q\}$

Q = the total period or time of the courses carried out

c. Room (r)

r = index of available classrooms, $r \in \{1, 2, 3, \dots, rk\}$

rk = the total number of usable classrooms

The objective function to be formulated by the model is (Kristiadi & Hartanto, 2019):

- a. Minimize the distribution of the lecturer's workload per day in one week while considering the competence.

$$S_l = \frac{\sum_{h=1}^H \left(B_{hl} - \sum_{h=1}^H \frac{B_{hl}}{H} \right)^2}{H} \quad (2)$$

$$XD = \sum_{l=1}^L \frac{S_l}{L} \quad (3)$$

Where S = Lecturer load variance, B = Lecturer credit load (sks), XD = average variance of lecturer load per day in one week, l = lecturer ($l=1, 2, 3, \dots, L$), L = set or number of lecturers, and h = day ($h=1, 2, 3, \dots, H$).

- b. Minimize the distribution of the workload of a group of students per day in one week

$$SM_l = \frac{\sum_{h=1}^H \left(M_{hl} - \sum_{h=1}^H \frac{M_{hl}}{H} \right)^2}{H} \quad (4)$$

$$XM = \sum_{l=1}^L \frac{SM_l}{L} \quad (5)$$

Where SM = Student load variance, M = Student credit load (sks), and XM = Average student load variance per day in each week.

The limitations of this model are (Buontempo, 2019):

- a. Courses are scheduled once on a certain day, a certain time slot, and in a certain room. This is expressed through the equation 6.

$$\sum_{i=1}^Q \sum_{j=1}^N \sum_{r=1}^{rk} X_{ijrh} = 1, \forall h \in H \quad (6)$$

where

$X_{ijrh} = 1$, if course j is scheduled on day h , room k and at starting time i

$X_{ijrh} = 0$, if course j is not scheduled on day h , room k and at starting time i

- b. A lecturer cannot teach more than one subject at a certain time period at the same time. This is expressed through the equation 7.

$$\sum_{j \in J_l} \sum_{r=1}^{rk} \sum_{i=1}^{i+sks_j} X_{ijrh} \leq 1, \forall i \in \{1,2,3, \dots, Q\}, \forall l \in \{1,2,3, \dots, L\}, \forall h \in \{1,2,3, \dots, H\} \quad (7)$$

where

J_l = a collection of courses taught by the l^{th} lecturers

Sks_j = number of credits in the j^{th} courses

- c. A room cannot be used for more than one course at the same time. This is expressed through the equation 8.

$$\sum_{j=1}^N X_{ijrk} \leq 1, \quad \forall i \in Q, \quad \forall r \in rk, \quad \forall h \in H \quad (8)$$

- d. Each course must have a total time allocation according to the weight of the credits. This is expressed through the equation 9.

$$\sum_{i=1}^Q \sum_{r=1}^{rk} X_{ijrh} \leq D_j, \quad \forall h \in H \quad (9)$$

where, D_j is duration for courses j

- e. Every lecture activity must stop before or at the end of the activity at the institution, therefore equation 10 is used to limit the time

$$\sum_{i=1}^Q X_{ijrh} (i + sks_j) \leq F, \forall j \in N, \quad \forall h \in H, \quad \forall r \in \{1,2,3, \dots rk\} \tag{10}$$

where F is time of completion of Institutional activities.

- f. The maximum number of parallel courses for the same class year is P_{max} , in a certain period. The above limitations are expressed through the equation 11.

$$\sum_{p=1}^{G_s} \sum_{r_p=1}^{R_p} \sum_{r=1}^{rk} \sum_{i=1}^{i+sks_j} Z_{spr_p,rih} \leq P_{max} \quad \forall i \in \{1,2,3, \dots Q\}, \quad \forall s \in \{1,2,3, \dots S\}, \tag{11}$$

$$\forall h \in \{1,2,3, \dots H\}$$

Where,

s = semester

S = number of semesters

p = parallel courses in semester s

G_s = parallel courses in semester s

r_p = parallel course class p

R_p = number of classes for parallel courses p

$Z_{spr_p,rih} = 1$, if the courses are in the s semester, for the type of parallel courses p and class r are scheduled on day h , room r and at starting time i .

$Z_{spr_p,rih} = 0$, if the courses are in semester s , for parallel courses type p and class r are not scheduled on day h , room r and at starting time i .

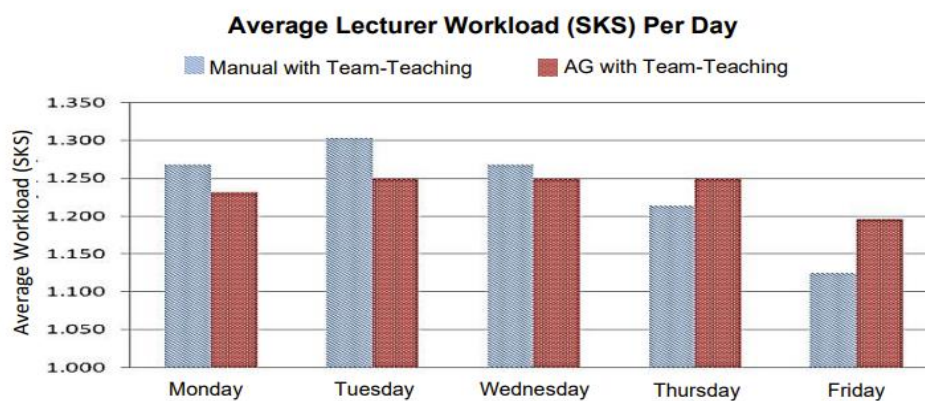
GA that implements the team teaching compares with manual scheduling based on the average standard deviation of the load of lecturers and students per day in one week is shown in Table 1.

Table 1. Scheduling Results Comparison

| Method | Mean of Standart Deviation | |
|----------------------------------|----------------------------|----------|
| | Lecturer | Students |
| Manual method with team-teaching | 1.604 | 4.12 |
| GA with team-teaching | 1.313 | 1.18 |

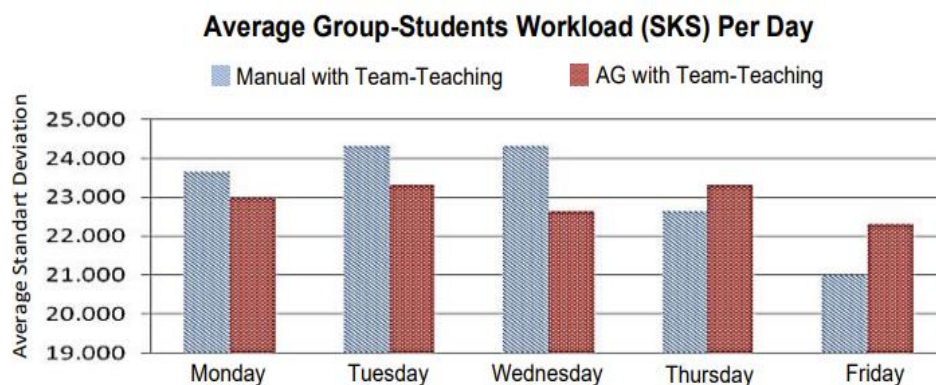
Source: Research Result

Based on Table 1, the scheduling of courses uses a genetic algorithm by paying attention to team teaching gives better results in terms of the distribution of the lecturer's workload and students, compared to manual scheduling. Scheduling using the GA method by paying attention to team teaching is able to reduce the average standard deviation of lecturer workloads per day (XD) as much as 0.114 or 3.68% and the average standard deviation of the workload of a group of students per day (XM) as much as 3.11 or 55.7%. The average workload of lecturers and students per day is shown in Figure 5 and Figure 6.



Source: Research Result

Figure 5. Graph of Average Lecturer Load (SKS) Per Day



Source: Research Result

Figure 6. Graph of Average Group-Students Workload (SKS) Per Day

The results of the genetic algorithm scheduling by considering team-teaching then compared with the results of the genetic algorithm scheduling without team-teaching that has been carried out in previous research (Laksono et al., 2016). Scheduling with team-teaching in mind will make the resulting schedule more realistic as shown in Table 2.

Table 2. Comparison of Course Clash Schedules in Real or Actual Conditions

| Method | Clash schedule when faced with real conditions |
|--------------------------|--|
| AG with team teaching | No |
| AG without team teaching | 7 Schedule clash |

Source: Research Result

4. Conclusion

Based on the results of the scheduling model using the Genetic Algorithm using Matlab software, the proposed scheduling of courses in the Informatics study program of UBJ produces a new schedule that is feasible with the best fitness value. The resulting schedule is close to the desired ideal condition with a *hard constraint* penalty of 0 and a *soft constraint* penalty of 8. The scheduling program that has been made has not involved the limitations of the lecturer's teaching schedule and the lecturer's team teaching. However, it can still be improved by adding an input matrix of the relationship between time and lecturers, and a matrix of lecturers' areas of expertise (team teaching).

Acknowledgements

The authors thank to Kemdikbud Ristek-Dikti in supporting this research as Penelitian Dosen Pemula (PDP) research grant. Also, for the LPPMP Universitas Bhayangkara Jakarta Raya as facilitator and reviewers who have given the insightful comments.

Author Contributions

Rafika proposed the topic; Rakhmad for collecting of primary and secondary data; Rafika, Rakhmat and Khairunnisa conceived models and designed the experiments; Rafika conceived the optimisation algorithms; Rafika and Khairunnisa analysed the result.

Conflicts of Interest

The author declare no conflict of interest.

References

Birbas, T. D. S. H. . (2007). *School Timetabling for Quality Student and Teacher*

PIKSEL status is accredited by the Directorate General of Research Strengthening and Development No. 28/E/KPT/2019 with Indonesian Scientific Index (SINTA) journal-level of S5, starting from Volume 6 (1) 2018 to Volume 10 (1) 2022.

Schedules.

- Buontempo, F. (2019). *Genetic Algorithms and Machine Learning for Programmers* (T. Coron (ed.)). The Pragmatic Programmers. <https://pragprog.com>
- Chaudhuri, A., & De, K. (2010). Fuzzy genetic heuristic for university course timetable problem. *International Journal of Advances in Soft Computing and Its Applications*, 2(1), 100–123.
- Darmawan, A., & Hasibuan, R. M. (2014). Penjadwalan Mata Kuliah Menggunakan Algoritma Genetika Dengan Mempertimbangkan Team-Teaching. *Simposium Nasional RAPI XIII*, 125–132.
- Eley, M. (2006). Ant algorithms for the exam timetabling problem. *PATAT*, 3867 LNCS, 364–382. https://doi.org/10.1007/978-3-540-77345-0_23
- Kanoh, H., & Sakamoto, Y. (2008). Knowledge-based genetic algorithm for university course timetabling problems. *International Journal of Knowledge-Based and Intelligent Engineering Systems*, 12(4), 283–294. <https://doi.org/10.3233/KES-2008-12403>
- Kristiadi, D., & Hartanto, R. (2019). Genetic Algorithm for Lecturing Schedule Optimization (Case Study : University of Boyolali). *IJCCS (Indonesian Journal of Computing and Cybernetics System)*, 13(1), 83–94. <https://doi.org/https://doi.org/10.22146/ijccs.43038>
- Laksono, A. T., Utami, M. C., & Sugiarti, Y. (2016). *Sistem Penjadwalan Kuliah Menggunakan Metode Algoritma Genetika (Studi Kasus : Fakultas Kedokteran Dan Kesehatan Universitas Muhammadiyah Jakarta)*. 9(2), 177–188.
- M. L. Ng, H. B. Gooi, and C. L. (2010). Staff Workload Scheduling in Large Engineering Schools. *Iranian Journal of Electrical and Computer Engineering*, 19(4), 255–264.
- Qu, R., Burke, E., Mccollum, B., Merlot, L. T. G., Lee, S. Y., Qu, C. R., Burke, E., Mccollum, B., Merlot, L. T. G., & Lee, S. Y. (2006). *University of Nottingham Jubilee Campus Computer Science Technical Report No . NOTTCS-TR-2006-4 A Survey of Search Methodologies and Automated Approaches for Examination Timetabling A Survey of Search Methodologies and Automated Approaches for Examination.*
- Russell, R. (2018). *Machine Learning: Step-by-Step Guide To Implement Machine Learning Algorithms with Python.*



Plagiarism Checker X Originality Report

Similarity Found: 15%

Date: Tuesday, April 05, 2022

Statistics: 706 words Plagiarized / 4710 Total words

Remarks: Low Plagiarism Detected - Your Document needs Optional Improvement.

Penelitian Ilmu Komputer, Sistem Embedded and Logic p-ISSN: 2303-3304, e-ISSN: 2620-3553 Vol. 10 (1): 1 – 7 (March 2022) PIKSEL status is accredited by the Directorate General of Research Strengthening and Development No. 28/E/KPT/2019 with Indonesian Scientific Index (SINTA) journal-level of S5, starting from Volume 6 (1) 2018 to Volume 10 (1) 2022.

1 Scheduling Courses Using Genetic Algorithm Based on Team-Teaching in Informatics Study Program UBJ Rafika Sari 1,* , Khairunnisa Fadhilla Ramdhanian1, and Rakhmat Purnomo1 * Correspondence Author: rafika.sari@dsn.ubharajaya.ac.id 1 Informatics Study Program, Faculty of Computer Science, Universitas Bhayangkara Jakarta Raya, Jl. Raya Perjuangan No.81 Margamulya, Bekasi utara, Bekasi, telp.(021) 88955882, e-mail: rafika.sari@dsn.ubharajaya.ac.id; rakhmat.purnomo@dsn.ubharajaya.ac.id; khairunnisa.fadhilla@dsn.ubharajaya.ac.id Submitted : d d / mm/y y y y Revised : d d / mm/y y y y Accepted : d d / mm/y y y y Published : d d / mm/ y y y y Abstract Scheduling problems occur in various fields including education, health institutions, transportation, sports and others.

Scheduling problems in education related with course scheduling which discusses the division of schedules for each student in certain lectures as well as teaching lecturers. In this study, course scheduling leads to the allocation of lecturers in the form of team teaching and courses into the class and a certain time to even out the workload of lecturers per day and a group of students per day in one week without breaking the constraint.

The method used in this research is a genetic algorithm heuristic method. The genetic algorithm process is done by getting several candidate solutions that undergo a process

of selection, mutation, and crossing over to produce chromosomes with the best fitness values. The objective function in this research is minimize the average variance of the workload of lecturers and students per day in one week.

The parameters used in AG are determined based on the Design Of Experiments mechanism (DOE). The optimal parameter values used to run the program are as: population size = 50, with probability of crossing over = 0.4 and probability of mutation = 0.008. The results of scheduling with genetic algorithms show that the value of the workload variance lecturers and students by considering team teaching is better than actual scheduling.

The application of the genetic algorithm method results in a decrease in the standard value deviation of the workload of lecturers and a group of students in one week is 0.114 (3.68%) and 3.11 (55.7%). In addition, course scheduling uses a genetic algorithm with consider team teaching better than genetic algorithm without considering team teaching because there is no class schedule that clashes in real conditions. Keywords: genetic algorithm, scheduling, subject of study, team-teaching 1.

Introduction Scheduling courses at educational institutions is a very complex problem to date this. The essence of course scheduling is how to schedule a number of components consisting of classes, subjects, lecturers, space and time with a number of certain Rafika Sari, Khairunnisa Fadhillah Ramdhania, and Rakhmat Purnomo 2 Pikel 10 (1): 1 - 7 (March 2022) limitations and conditions.

Class scheduling included in the type of timetabling. Timetabling problems can be classified as NP-Hard Problem (nondeterministic polynomial time). The NP-Hard Problem is a problem that if all alternative combinations are tried to be tested, then the time needed to find the right solution feasible of the problem will increase sharply (Birbas, 2007).

Therefore the solution optimization problems will be difficult to do using conventional optimization methods (Kano & Sakamoto, 2008). Students and teaching staff are the main components in the teaching system that must be scheduled (Chaudhuri & De, 2010). Scheduling that pays attention to students and teaching staff, such as student learning workload and teaching staff preferences will result in good scheduling.

Good scheduling will improve the quality of teaching and learning. Scheduling problems Lectures at educational institutions have many variations according to the policies of educational institutions where the class schedule is used. Scheduling courses at an educational institution is used as a as a case study where the preparation uses a manual

method that does not use a different algorithm often applied in NP-Hard problems.

The manual method has limitations for creating scheduling that takes into account the components of students and teaching staff in educational institutions. Time the preparation of scheduling using the manual method takes a long time to be able to get a schedule that is in line with expectations. Therefore, this research aims to develop a model for scheduling courses in educational institutions while taking into account existing limitations and taking into account the reality of team-teaching. Research on timetabling has been done a lot.

Exam timetabling and course timetabling is a type of scheduling problem in university education (Qu et al., 2006). Kanoh & Sakamoto (2008) completed the timetabling course by using a combination of local search and algorithms genetics to find the optimal solution to meet the soft constraints. Good scheduling is obtained of several individuals during the running process in the model. The method used in solving it is knowledge based (KB).

The knowledge based method will produce a partial solution that is entered in the Genetic Algorithm (GA) model in each generation. The results of this study indicate that the model genetic algorithm with the addition of prior period/knowledge based scheduling information is better than the genetic algorithm model without the addition of prior period/knowledge based scheduling information. Gooi, et.al (2010) optimize the workloading staff by involving 250 academic staff and 400 college student.

The Scheduling Courses Using Genetic Algorithm Based on Team-Teaching in Informatics Study Program UBJ PIKSEL status is accredited by the Directorate General of Research Strengthening and Development No. 28/E/KPT/2019 with Indonesian Scientific Index (SINTA) journal-level of S5, starting from Volume 6 (1) 2018 to Volume 10 (1) 2022.

3 staff in this study indicate the teaching staff who in the model are scheduled for assignments teaching. There are five types of classes in one semester that must be met in carrying out assignments teaching so that weekly timetabling becomes feasible. The five classes are lecture, tutorial, project, design, and laboratories. Constraints used in the model, namely Hard, medium, and soft constraints.

Which method used to get the optimal value of this problem is Simulated Annealing (SA). M. Eley (2006) perform scheduling optimization with the aim of evening out the student learning load and distribute the test points evenly. The Max Min Ant Systems (MMAS) method is used in this study to find the optimal solution. Source: Research

Result Figure 1.

Illustration of the use of class for courses. The results of this method are compared with several methods of Ant Colony and Ant Colony with Hill Climbing. Comparisons were made by testing on 13 different university data sets, with the results of comparisons varying across all data. Then Birbas (2007) used the integer programming method for scheduling Shift Assignment for teaching staff, which obtained a feasible teaching schedule that did not experience conflicts, and there was a schedule fit between the teaching staff and Rafika Sari, Khairunnisa Fadhillah Ramdhania, and Rakhmat Purnomo (2022) students. *Piksel 10 (1): 1 - 7 (March 2022)*

In addition, Darmawan & Hasibuan (2014) conducted research on course scheduling based on the distribution of the workload of lecturers and students evenly without considering team teaching. The method used to find the optimal solution of the course scheduling problem is the genetic algorithm method. The result is in the form of teaching scheduling and the distribution of the workload of teaching staff and students.

This research was conducted to obtain a schedule of courses in the Informatics study program, Faculty of Computer Science, Universitas Bhayangkara Jakarta Raya (UBJ). The aim that the number of conflicting courses can be reduced, the number of available lecturers can teach according to the maximum credit load, the student lecture load is more evenly distributed, and the use of classrooms is more optimal. The optimization of the lecture schedule using a genetic algorithm (GA).

Genetic Algorithm is one of the algorithms that can be used to solve problems on a large scale and has a high level of complexity so that it is suitable for solving the problem of scheduling courses at universities which are known to be complicated and have many variable constraints in making class schedules. The expected result of this research is an optimal course schedule. 2.

Research Method The data used to compile the class schedule is obtained from a database regarding administration of lectures in an educational institution. The data include list data room, teaching staff data for certain courses, time period data for certain subject units, data courses in a certain period of time, data on the year of class, majors, types of courses and credits for each subject studying.

An illustration of the use of space for courses on a daily basis can be seen in Figure 1. The software used in this research is a system Windows 10 operating system, Matlab R2016a for writing and building algorithm models. The method of finding a solution that used in scheduling courses in this research is the Genetic Algorithm, where this

method is a heuristic method or approach that applies the proposed processes of natural selection and evolution by Charles Darwin. In general, the research flow chart can be seen in Figure 2.

Scheduling Courses Using Genetic Algorithm Based on Team-Teaching in Informatics Study Program UBJ PIKSEL status is accredited by the Directorate General of Research Strengthening and Development No. 28/E/KPT/2019 with Indonesian Scientific Index (SINTA) journal-level of S5, starting from Volume 6 (1) 2018 to Volume 10 (1) 2022. 5 Source: Research Result Figure 2.

Flowchart of course scheduling using Genetic Algorithm The model of the chromosomes in the genetic algorithm is adjusted to the shape of the course schedule at the institution education, where the chromosome consists of several genes. Genes are formed is a representation of the schedule courses for certain lecturers on certain days in certain time slots, as well as intended for students students of certain study programs and certain semesters. Representation of simple chromosomes in the case of akademik scheduling as shown in Figure 3.

The crossover and mutation method used are one-point crossover and swap mutation, respectively, as can be seen in Figure 4. Rafika Sari, Khairunnisa Fadhillah Ramdhanita, and Rakhmat Purnomo 6 Pikel 10 (1): 1 - 7 (March 2022) Source: Darmawan & Hasibuan (2014) Figure 3. Chromosome representation illustration Source: Darmawan & Hasibuan (2014) Figure 4.

One Point Order Crossover Process and Mutation Process using the Swap Method Parent selection is done by the roulette wheel method. In this selection method, parents are selected based on the fitness value, the better the fitness value, the more likely it is to be selected. Process parent selection begins by doing a linear Scheduling Courses Using Genetic Algorithm Based on Team-Teaching in Informatics Study Program UBJ PIKSEL status is accredited by the Directorate General of Research Strengthening and Development No.

28/E/KPT/2019 with Indonesian Scientific Index (SINTA) journal-level of S5, starting from Volume 6 (1) 2018 to Volume 10 (1) 2022. 7 fitness ranking (LFR) with the aim of increasing variation so as not to occur local optimum and further clarify the position between the chromosomes with their fitness. Linear Fitness Ranking is done after fitness is sorted from the largest to the smallest LFR formula expressed in the following equation.

(Russell, 2018) where LFR_k : Linear fitness ranking MaxF : Fitness maximum in one

population MinF : Fitness minimum in one population k : Chromosom number n_p : Size of the number chromosomes in one population n_k : Index of number from 1 to n_p The Design of Experiment (DOE) was carried out to find the genetic algorithm parameters in the form of the number of population, crossover rate and mutation rate where the results are as follows, respectively, 50; 0.4; and 0.008.

The solution search process is carried out up to 1000 iterations, and generally it looks convergent. 3. Results and Analysis Mathematical models are represented to describe course scheduling problems at institutions education. The mathematical model is formulated as follows: a.

Course set (j) j = index of courses contained in the academic period offered, $j \in \{1,2,3, \dots, J\}$ J = the total number of courses b. Starting time (i) i = index of the period or time of the course being implemented, $i \in \{1,2,3, Q\}$ Q = the total period or time of the courses carried out c. Room (r) r = index of available classrooms, $r \in \{1,2,3, r_k\}$ r_k = the total number of usable classrooms Rafika Sari, Khairunnisa Fadhillah Ramdhania, and Rakhmat Purnomo 8 Piksel 10 (1): 1 - 7 (March 2022) The objective function to be formulated by the model is (Kristiadi & Hartanto, 2019) 1.

Minimize the distribution of the lecturer's workload per day in one week while considering the competence. (2) (3) Where S = Lecturer load variance, B = Lecturer credit load (sks), XD = average variance of lecturer load per day in one week, l = lecturer ($l = 1,3 L$), L = set or number of lecturers, and h = day ($h = 1,3... H$). 2.

Minimize the distribution of the workload of a group of students per day in one week (4) (5) Where SM = Student load variance, M = Student credit load (sks), and XM = Average student load variance per day in each week. The limitations of this model are (Buontempo, 2019) 1. Courses are scheduled once on a certain day, a certain time slot, and in a certain room. This is expressed through the equation 6.

(6) where $X_{ijrh} = 1$, if course j is scheduled on day h , room k and at starting time i $X_{ijrh} = 0$, if course j is not scheduled on day h , room k and at starting time i 2. A lecturer cannot teach more than one subject at a certain time period at the same time. This is expressed through the equation 7. Scheduling Courses Using Genetic Algorithm Based on Team-Teaching in Informatics Study Program UBJ PIKSEL status is accredited by the Directorate General of Research Strengthening and Development No. 28/E/KPT/2019 with Indonesian Scientific Index (SINTA) journal-level of S5, starting from Volume 6 (1) 2018 to Volume 10 (1) 2022.

9 (7) where Jl = a collection of courses taught by the l th lecturers SKS_j = number of

credits in the j th courses 3. A room cannot be used for more than one course at the same time. This is expressed through the equation 8. (8) 4. Each course must have a total time allocation according to the weight of the credits. This is expressed through the equation 9.

(9) where, D_j is duration for courses j 5. Every lecture activity must stop before or at the end of the activity at the institution, therefore equation 10 is used to limit the time (10) where F is time of completion of Institutional activities. 6. The maximum number of parallel courses for the same class year is P_{max} , in a certain period of time.

The above limitations are expressed through the equation 11. (11) where, s = semester S = number of semesters p = parallel courses in semester s Rafika Sari, Khairunnisa Fadhilla Ramdhanisa, and Rakhmat Purnomo 10 Pikel 10 (1): 1 - 7 (March 2022) G_s = parallel courses in semester s r_p = parallel course class p R_p = number of classes for parallel courses p where, $Z_{sprpkih} = 1$, if the courses are in the s semester, for the type of parallel courses p and class r are scheduled on day h , room r and at starting time i .

$Z_{sprpkih} = 0$, if the courses are in semester s , for parallel courses type p and class r are not scheduled on day h , room r and at starting time i . Comparison of GA scheduling by paying attention to team teaching with manual scheduling carried out based on the average standard deviation of the load of lecturers and students per day in one week. Results comparison is shown in Table 1. Table 1.

Scheduling Results Comparison Method Mean of Standart Deviation Lecturer Students
Manual method with team-teaching 1.604 4.12 GA with team-teaching 1.313 1.18
Source: Research Result Based on Table 1. it can be explained that the scheduling of courses uses a genetic algorithm by paying attention to team teaching gives better results in terms of the distribution of the lecturer's workload and students, compared to manual scheduling.

Scheduling using the AG method by paying attention to team teaching is able to reduce the average standard deviation of lecturer workloads per day (XD) as much as 0.114 or 3.68% and the average standard deviation of the workload of a group of students per day (XM) as much as 3.11 or 55.7%. The average workload of lecturers and students per day is shown in Figure 5. And Figure 6.

Scheduling Courses Using Genetic Algorithm Based on Team-Teaching in Informatics Study Program UBJ PIKSEL status is accredited by the Directorate General of Research Strengthening and Development No. 28/E/KPT/2019 with Indonesian Scientific Index (SINTA) journal-level of S5, starting from Volume 6 (1) 2018 to Volume 10 (1) 2022. 11

Figure 5. Graph of Average Lecturer Load (SKS) Per Day Source: Research Result Figure 6.

Graph of Average Group-Students Workload (SKS) Per Day Source: Research Result The results of the genetic algorithm scheduling by considering team-teaching then compared with the results of the genetic algorithm scheduling without team-teaching that has been carried out in previous research (Laksono et al., 2016). Scheduling with team-teaching in mind will make the resulting schedule more realistic as shown in Table 2. Table 2.

Comparison of Course Clash Schedules in Real or Actual Conditions Method Clash schedule when faced with real conditions AG with team teaching No AG without team teaching 7 Schedule clash Source: Research Result Rafika Sari, Khairunnisa Fadhilla Ramdhanita, and Rakhmat Purnomo 12 Piksel 10 (1): 1 - 7 (March 2022) 4. Conclusion Based on the results of the scheduling model using the Genetic Algorithm using Matlab software, it can be concluded that the scheduling of courses in the Informatics study program of UBJ produces a new schedule that is feasible with the best fitness value.

The resulting schedule is close to the desired ideal condition with a hard constraint penalty of 0 and a soft constraint penalty of 8. The scheduling program that has been made has not involved the limitations of the lecturer's teaching schedule and the lecturer's team teaching. However, it can still be improved by adding an input matrix of the relationship between time and lecturers, and a matrix of lecturers' areas of expertise (team teaching).

Acknowledgements The authors thank to Kemdikbud Ristek-Dikti in supporting this research as Penelitian Dosen Pemula (PDP) research grant. Also, for the LPPMP Universitas bhayangkara Jakarta Raya as facilitator and reviewers who have given the insightful comments. Author Contributions Rafika proposed the topic; Rakhmat for collecting of primary and secondary data; Rafika, Rakhmat and Khairunnisa conceived models and designed the experiments; Rafika conceived the optimisation algorithms; Rafika and Khairunnisa analysed the result.

Conflicts of Interest The author declare no conflict of interest. References Birbas, T. D. S. H. . (2007). School Timetabling for Quality Student and Teacher Schedules. Buontempo, F. (2019). Genetic Algorithms and Machine Learning for Programmers (T. Coron (ed.)). The Pragmatic Programmers. <https://pragprog.com> Chaudhuri, A., & De, K. (2010). Fuzzy genetic heuristic for university course timetable problem.

International Journal of Advances in Soft Computing and Its Applications, 2(1), 100-123.

Scheduling Courses Using Genetic Algorithm Based on Team-Teaching in Informatics Study Program UBJ PIKSEL status is accredited by the Directorate General of Research Strengthening and Development No. 28/E/KPT/2019 with Indonesian Scientific Index (SINTA) journal-level of S5, starting from Volume 6 (1) 2018 to Volume 10 (1) 2022.

13 Darmawan, A., & Hasibuan, R. M. (2014). PENJADWALAN MATA KULIAH MENGGUNAKAN ALGORITMA GENETIKA DENGAN MEMPERTIMBANGKAN TEAM-TEACHING. Simposium Nasional RAPI XIII, 125-132. Eley, M. (2006). Ant algorithms for the exam timetabling problem. PATAT, 3867 LNCS, 364 – 382. https://doi.org/10.1007/978-3-540-77345-0_23 Kanoh, H., & Sakamoto, Y. (2008). Knowledge-based genetic algorithm for university course timetabling problems.

International Journal of Knowledge-Based and Intelligent Engineering Systems, 12(4), 283-294. <https://doi.org/10.3233/KES-2008-12403> Kristiadi, D., & Hartanto, R. (2019). Genetic Algorithm for Lecturing Schedule Optimization (Case Study : University of Boyolali). IJCCS (Indonesian Journal of Computing and Cybernetics System), 13(1), 83-94. <https://doi.org/10.22146/ijccs.43038> Laksono, A. T., Utami, M. C.,

& Sugiarti, Y. (2016). SISTEM PENJADWALAN KULIAH MENGGUNAKAN METODE ALGORITMA GENETIKA (STUDI KASUS : FAKULTAS KEDOKTERAN DAN KESEHATAN UNIVERSITAS MUHAMMADIYAH JAKARTA). 9(2), 177-188. M. L. Ng, H. B. Gooi, and C. L. (2010). Staff Workload Scheduling in Large Engineering Schools.

Iranian Journal of Electrical and Computer Engineering, 19(4), 255-264. Qu, R., Burke, E., Mccollum, B., Merlot, L. T. G., Lee, S. Y., Qu, C. R., Burke, E., Mccollum, B., Merlot, L. T. G., & Lee, S. Y. (2006). University of Nottingham Jubilee Campus Computer Science Technical Report No. NOTTCS-TR-2006-4 A Survey of Search Methodologies and Automated Approaches for Examination Timetabling A Survey of Search Methodologies and Automated Approaches for Examination. Russell, R. (2018). Machine Learning: Step-by-Step Guide To Implement Machine Learning Algorithms with Python.

Rafika Sari, Khairunnisa Fadhilla Ramdhaniana, and Rakhmat Purnomo 14 Piksel 10 (1): 1 - 7 (March 2022) <<Do Not Remove this page>> << This checklist must fill when submitted to Journal PIKSEL >> Authors Submission Checklist All manuscript must meet the following criteria to be processed into the peer-review stage. Failure to meet the following criteria may increase the processing time of the manuscript or even rejection.

Write OK if the authors have confirmed that the manuscript meets the criteria. If the author cannot fulfill these criteria, give a reason and write in the checklist with highlighted text. 1 Template and Layout Authors Claim & Comment Editors Comment

1.1 Have used the latest Journal PIKSEL template (latest update September 2021) v 1.2

Introduction, Literature Review (optional), Methods, Result, Discussion, and Conclusion are written in a separate section. 1.3 Not using Bullet / Numbering in the manuscript text.

1.4 The length of the text is between 10 and 20 pages. 2 Title and Authors Information 2.1 The title is written briefly, describing the contents and contributions of the manuscript.

The title also does not use abbreviations or acronyms except the standard ones. 2.2 All authors have been written in the manuscript and also in the OJS system. One of the authors who corresponded through the OJS system was determined as the correspondence authors. 2.3 All authors must include e-mails in the manuscript and in the OJS system. 2.4

Affiliation information is written in 1 line in the text, at least showing the name of the institution, and country. Full Address information should be written in 1 line below affiliation information. 2.5 The title of the manuscript is written using 'Capitalize Each Word', except conjunctions using lowercase. 2.6

The place and time of research do not need to be included in the title unless the research is specific to a particular time and place. 3 Abstracts and Keywords 3.1 Abstract consists of 150 to a maximum of 250 words. 3.2 Abstracts arranged in a structured manner. Consisting of Background, Objective, Methods, Results, and Conclusion 3.3 The number of keywords between 4 and 6. 3.4 All keywords must be written in the abstract.

3.5 Keywords are arranged in alphabetical order. 3.6 a combination of all keywords represents the content, contribution, or purpose of the text. 3.7 Keywords are in the form of noun phrases. Avoid using titles as keywords in the text. 4 Introduction 4.1 Has explained the context/object of research and must focus in accordance with the scope of the title. 4.2 Has explained why this research is important. 4.3

It has included the existing research gap, explaining the unique differences from this study compared to similar previous studies. 4.4 Has written research objectives/contributions explicitly. 4.5 The length of this section is between 300 – 700 words. 5 Related Works 5.1 This section is optional. This section may only be available if the explanation related to previous research is not sufficient if it is only shown in the introduction.

If this section exists, you must cite at least 6 recent papers that are closely related to the title of the paper. 6 Methods 6.1 Has cited a source who helped the authors in the

selection of methods. 6.2 Has explained how data is obtained. 6.3 The procedure has been written chronologically and clearly. 6.4 The authors have written how the results will be measured, tested, and evaluated.

Scheduling Courses Using Genetic Algorithm Based on Team-Teaching in Informatics Study Program UBJ PIKSEL status is accredited by the Directorate General of Research Strengthening and Development No. 28/E/KPT/2019 with Indonesian Scientific Index (SINTA) journal-level of S5, starting from Volume 6 (1) 2018 to Volume 10 (1) 2022. 15 7 Results 7.1 The results of the study are written in logical sequences, according to the research flow. 7.2

The results of the study are presented in the form of narrative/textual, tables or images in the form of graphs or diagrams. Avoid displaying raw data. 8 Discussion 8.1 An explanation of the results and in-depth analysis has been written. 8.2 Comparison of results with other studies has been written. 8.3 Limitation of study or threat to validity has been written. 9 Conclusion 9.1

It has been explicitly written down the contribution of the manuscript and the answers to the research questions. 10 Acknowledgments 10.1 If it is a funded research, information on funders agency must be provided along with the contract number (if any). 11 References 11.1 Always use automatic citation tools for managing your references.

make sure that you already double check the citation metadata, automatic citation tool usually has metadata errors. you can use Mendeley, Zotero, and other automatic citation tools. we recommend using standard Citation & Bibliography feature in Microsoft Word. American Psychological Association 7th edition style. 11.2 Make sure all information related to the reference is written completely (eg Who, Where, and When).

Check from the primary source for this information. write the name of the journal without abbreviations. please include DOI if it's available. 11.3 Have cite a minimum of 10 references. a minimum of 80% comes from journal articles/conferences. a minimum of 80% must be published in the last 10 years. 11.4 More than 50% of the references must come from credible sources.

for example ScienceDirect, IEEE Explorer, ACM Digital Library, Springer Link, Scopus, Clarivate Analytics, and Indonesian national accredited journals (SINTA 1/2). 12 Tables and Figures 12.1 Already using the appropriate format in displaying images and tables. 12.2 The image or graph must be self-explanatory, so it does not depend on the text. 12.3

Minimum image resolution is not specified, but must be clearly visible when published online (colored) or printed (black and white). 12.4 Images do not have copyright issues. 12.5 All images and tables have been referenced in the manuscript. 12.6 The maximum number of images and tables is respectively 6. giving the reason to the editor if you need to display more than the recommended amount.

12 Languages 12.1 There are no spelling mistakes, typos, and grammatical errors. You can use tools such as Grammarly or recommendations provided by MS Word for language checking. 12.2 Use direct and short sentences. Long sentences do not make the writing more professional; they only confuse readers.

16 <<Do Not Remove this page>> << This checklist must fill when submitted to Journal PIKSEL >> OUTLINING HOW THE ISSUES ARE ADDRESSED Title of paper: 1. Address all the concerns/recommendations of the reviewers. 2. All amendments made are to be highlighted in yellow color in the revised paper. Reviewer # 1 Final Recommendation Accepted without modification Accepted with minor corrections Accepted with major modification Rejected Comments Addressed (Y/N) Reply/Action taken (Please add more rows if needed) Reviewer # 2 Final Recommendation Accepted without modification Accepted with minor corrections Accepted with major modification Rejected Comments Addressed (Y/N) Reply/Action taken (Please add more rows if needed) Reviewer # 3 Final Recommendation Accepted without modification Accepted with minor corrections Accepted with major modification Rejected Comments Addressed (Y/N) Reply/Action taken The first three words of the title ...

Journal Pikel 8(1): 1-3 (Maret 2020) 17 (Please add more rows if needed)

INTERNET SOURCES:

4% - <https://jurnal.unismabekasi.ac.id/>

<1% -

https://www.researchgate.net/publication/348878352_Sistem_Informasi_Geografis_Lokas_i_Kualitas_Air_Pada_PDAM_Patriot_Bekasi

<1% -

https://www.academia.edu/40682177/PERBANDINGAN_LOGIKA_FUZZY_DAN_ANALYTIC_HIERARCHY_PROCESS_UNTUK_MENILAI_KINERJA_DOSEN

<1% - <https://scoop.eduncle.com/ugc-regulations-and-guidelines-for-professors-and-jrf>

<1% - <https://link.springer.com/article/10.1007/s10928-013-9321-5>

<1% -

<https://www.grossarchive.com/project/6967/design-and-implementation-of-examinatio>

n-scheduling-and-allocation-system

<1% - <https://www.atlantis-press.com/article/25906874.pdf>

<1% - <https://www.teachertoolkit.co.uk/2016/06/18/quality-of-teaching/>

<1% - <https://ieeexplore.ieee.org/document/8790257/>

<1% - <https://www.inderscience.com/info/ingeneral/forthcoming.php?jcode=ijlc>

<1% - <https://core.ac.uk/download/pdf/11791055.pdf>

<1% -

https://www.researchgate.net/publication/286304872_A_Hybrid_Neural_Network_and_Genetic_Algorithm_Based_Model_for_Short_Term_Load_Forecast

<1% - <http://ieomsociety.org/proceedings/2021indonesia/99.pdf>

<1% -

https://www.academia.edu/2720004/Instruction_scheduling_using_MAX_MIN_ant_system_optimization

<1% -

<https://www.uwlax.edu/globalassets/offices-services/urc/jur-online/pdf/2016/meyers-morrison.jack-daniel.mth.pdf>

<1% -

https://www.researchgate.net/publication/2718690_Using_Genetic_Algorithms_to_Solve_NP-Complete_Problems

<1% -

https://www.cs.utexas.edu/~grauman/courses/fall2009/papers/local_features_synthesis_draft.pdf

<1% - <https://www.hindawi.com/journals/complexity/2022/6322834/>

<1% -

<https://sciencing.com/natural-selection-definition-darwins-theory-examples-facts-13719065.html>

<1% - <https://www.hindawi.com/journals/mpe/2014/246543/>

<1% - <https://bmcbgenomics.biomedcentral.com/articles/10.1186/s12864-021-08207-8>

<1% -

https://www.researchgate.net/publication/223655262_Mutation-based_genetic_algorithm_Performance_evaluation

<1% - <https://cse.sc.edu/~mgv/csce580sp15/gradPres/580sp15ShoberZhengGA.pdf>

<1% - <https://blog.paperspace.com/genetic-algorithm-applications-using-pygad/>

<1% -

https://www.academia.edu/73600723/Shortest_Path_Finding_Using_Dijkstra_s_Algorithm

<1% - <https://onlinelibrary.wiley.com/doi/10.1002/ese3.1038>

<1% - <https://www.sciencedirect.com/science/article/pii/S0952197612002679>

<1% - <https://onlinelibrary.wiley.com/doi/10.1002/eej.22382>

<1% - <https://www.sciencedirect.com/science/article/pii/S1477842418300368>

<1% - <https://www.databasesstar.com/database-normalization/>

<1% - <https://viewfromthewing.com/9-ways-american-airlines-outshines-competitors/>
<1% -
https://www.academia.edu/36752960/Facilitating_learning_Teaching_and_learning_methods
<1% -
https://www.researchgate.net/publication/271914293_Optimization_of_job_shop_scheduling_problems_using_teaching-learning-based_optimization_algorithm
<1% -
https://www.academia.edu/74572112/Land_Change_Modeler_for_Analysing_Diminishing_of_Vegetation_in_Bekasi
<1% -
<https://dokumen.pub/genetic-algorithms-and-machine-learning-for-programmers-create-ai-models-and-evolve-solutions-book-version-p-10nbsped-9781680506204-168050620x.html>
<1% -
<https://www.researchgate.net/journal/International-Journal-of-Advances-in-Soft-Computing-and-its-Applications-2074-8523>
<1% - <http://journal.uin-alauddin.ac.id/index.php/instek/article/view/16587>
<1% - <https://personal.ntu.edu.sg/ehbgooi/>
<1% - <https://dl.acm.org/doi/book/10.5555/534133>
<1% - <https://core.ac.uk/download/pdf/33573364.pdf>
<1% -
https://www.researchgate.net/publication/228782020_Constructive_versus_improvement_heuristics_an_investigation_of_examination_timetabling
<1% - https://www.elsevier.com/_data/promis_misc/APRM_Checklist.pdf
<1% -
https://www.weather-climate-dynamics.net/peer_review/interactive_review_process.html
<1% - <https://publishdrive.com/prepare-manuscript-ebook-conversion.html>
2% - <https://e-journal.unair.ac.id/index.php/JISEBI/about/submissions>
<1% - <https://refuge.journals.yorku.ca/index.php/refuge/about/submissions>
<1% - https://libguides.uta.edu/apa/title_page
<1% - <http://www.sportmont.ucg.ac.me/?sekcija=page&p=51>
<1% - <https://consumerresearcher.com/wp-content/uploads/2021/01/stylesheet.pdf>
<1% - <https://www.ncbi.nlm.nih.gov/pmc/articles/PMC3136027/>
<1% - <https://www.ncbi.nlm.nih.gov/pmc/articles/PMC7737757/>
<1% -
https://newiso9001.files.wordpress.com/2016/12/clause_by_clause_explanation_of_iso_9001_2015_en.pdf
<1% - <https://researchguides.library.syr.edu/socresearch/schlsourc>
1% - <https://ejournal3.undip.ac.id/index.php/medico/about/submissions>

<1% - <https://aut.ac.nz.libguides.com/APA7th>
<1% - <https://ourworldindata.org/trade-and-globalization>
<1% - <https://journal.trunojoyo.ac.id/ijseit/about/submissions>
<1% - <https://www.headphonesty.com/2019/07/sample-rate-bit-depth-bit-rate/>
<1% - <https://blog.hubspot.com/marketing/14-worst-typos-ever>
<1% - <https://www.guru99.com/best-grammar-checker.html>
<1% - <https://www.nature.com/articles/srep01679>
<1% -
https://www.researchgate.net/publication/340504186_Logistic_Model_Tree_and_Decision_Tree_J48_Algorithms_for_Predicting_the_Length_of_Study_Period



UNIVERSITAS BHAYANGKARA JAKARTA RAYA
FAKULTAS ILMU KOMPUTER

Kampus I: Jl. Harsono RM No. 67, Ragunan, Pasar Minggu, Jakarta Selatan 12550
Telepon: (021) 27808121 – 27808882
Kampus II: Jl. Raya Perjuangan, Marga Mulya, Bekasi Utara, Jawa Barat, 17142
Telepon: (021) 88955882, Fax.: (021) 88955871
Web: fasilkom.ubharajaya.ac.id, E-mail: fasilkom@ubharajaya.ac.id

SURAT TUGAS

Nomor: ST/160/III/2022/FASILKOM-UBJ

1. Dasar: Kalender Akademik Ubhara Jaya Tahun Akademik 2021/2022.
2. Dalam rangka mewujudkan Tri Dharma Perguruan Tinggi untuk Dosen di Universitas Bhayangkara Jakarta Raya maka dihimbau untuk melakukan Penelitian.
3. Sehubungan dengan hal tersebut di atas, maka Dekan Fakultas Ilmu Komputer Universitas Bhayangkara Jakarta Raya menugaskan:

| NO. | NAMA | NIDN | JABATAN | KETERANGAN |
|-----|---|------------|-------------------------------|-------------------------|
| 1. | Rafika Sari, S.Si., M.Si. | 0329098902 | Dosen Tetap Prodi Informatika | Sebagai Penulis Pertama |
| 2. | Khairunnisa Fadhillah Ramdhania, S.Si., M.Si. | 0328039201 | Dosen Tetap Prodi Informatika | Sebagai Penulis Kedua |
| 3. | Rakhmat Purnomo, S.Pd., S.Kom., M.Kom. | 0322108201 | Dosen Tetap Prodi Informatika | Sebagai Penulis Ketiga |

Membuat Artikel Ilmiah dengan judul “***Team-Teaching-Based Course Scheduling Using Genetic Algorithm***” dengan menerima LoA pada tanggal 03 Maret 2022 untuk dipublikasikan di media Jurnal Penelitian Ilmu Komputer, Sistem *Embedded and Logic* (PIKSEL), Vol. 10, No. 1, Hal. 55 – 56, Maret 2022, p-ISSN: 2303-3304, e-ISSN: 2620-3553.

4. Demikian penugasan ini agar dapat dilaksanakan dengan penuh rasa tanggung jawab.



Bekasi, 03 Maret 2022

DEKAN FAKULTAS ILMU KOMPUTER

Dr. Tyastuti Sri Lestari, S.Si., M.M.
NIP. 1408206