

See discussions, stats, and author profiles for this publication at: <https://www.researchgate.net/publication/326253403>

# Fuzzy multi-attribute decision making for students achievement selection using e-technology

Article in *International Journal of Pure and Applied Mathematics* · January 2018

CITATION

1

READS

78

2 authors:



**Nawindah Nawindah**

Universitas Budi Luhur Indonesia Jakarta

14 PUBLICATIONS 8 CITATIONS

SEE PROFILE



**Dewi Puspaningtyas Faeni**

Universitas Budi Luhur

35 PUBLICATIONS 16 CITATIONS

SEE PROFILE

Some of the authors of this publication are also working on these related projects:



INSINAS BRIN Project [View project](#)

## Fuzzy multi-attribute decision making for students achievement selection using e-technology

Nawindah, Dewi Puspaningtyas Faeni

Faculty of Technology Information, Faculty of Economics and Business

Universitas Budi Luhur,

Jakarta, Indonesia

Email: [nawindah@budiluhur.ac.id](mailto:nawindah@budiluhur.ac.id), [dewifaeni@budiluhur.ac.id](mailto:dewifaeni@budiluhur.ac.id)

**Abstract:** The determination of student achievements (Pilmapres) level from the faculty sometimes face problems when certain criterias on the candidates does not meet, but on the other hand criteria assessment obtained exceeds the requirements, also when the data or information provided both by the jury and data criteria of the candidates are incomplete or contain uncertainty which lead to uncertain value. So therefore the aim of this study is to use fuzzy MADM method technique for order preference by similarity to ideal solution (TOPSIS) to determine the best performing students in the faculty level. Results of this research is the application of fuzzy MADM with TOPSIS method to support decision making in the selection of outstanding students with a faculty level candidates from as many as 20 students.

**Keywords:** fuzzy MADM; TOPSIS; Pilmapres.

### 1. Introduction

Multi-criteria decision making (MCDM) is a decision making method to establish the best alternative from a number of alternatives based on several criterias. Based on its objective, MCDM can be divided into two models [1-3]. MCDM is a decision making method to establish the best alternative from a number of alternatives based on certain criterias [4-6]. Based on the MCDM goal it is divided into two models: Multi-attribute decision making (MADM); and multi-objective decision making (MODM) [7-9]. MADM is used to make the selection of a number of alternatives in limited quantities while MODM is used to design the best alternative (e.g., Ashraf et al., 2016; Bahiraei et al., 2015; Wang and Ji, 2014; Gong et al., 2013; Mohyeddin and Gharaee, 2014) [10-11]. If the data or information provided both by the jury and data criteria of candidates are incomplete or contain uncertainty, then to address the issue of uncertainty we utilise the fuzzy MCDM method called fuzzy MADM and fuzzy MODM (Kusumadewi and Purnomo, 2010; Kusumadewi et al., 2006) [12-15]. Selection of the best students, an activity to select or search for and provide awards to students who achieved high achievements in both curricular and extra curricular in accordance with the criteria specified (Riseldikti, 2017) [16-19]. The purpose of this study is to utilise the fuzzy MADM method to determine the best performing student faculty level [20].

**2. Theoretical setting**

**2.1 Fuzzy Sets and Fuzzy Numbers**

*Definitions 1 :*

A fuzzy set in  $X$  is defined by :  $A = \{x, \mu_A(x)\}, x \in X$  .....Equation 1

in which  $\mu_A(x): X \rightarrow [0, 1]$  is the membership function of  $A$  and  $\mu_A(x)$  is the degree of membership of  $x$  in  $A$ . If  $\mu_A(x)$  equals 1,  $x$  completely belongs to fuzzy set  $A$ . Unlike in classical set theory,  $\mu_A(x)$  may be a value between zero and one, capturing partial membership of  $x$  in the fuzzy set  $A$  (Zadeh, 1965).

*Definition 2:*

A fuzzy number  $M$  is a convex normal fuzzy set  $M$  of the real line  $R$  such that Zimmermann (1992).

There exists exactly one  $x_0 \in R$  with  $\mu_M(x_0) = 1$  ( $x_0$  is called mean value of  $M$ ) and  $\mu_M(x)$  is continuous. The triangular fuzzy number (TFN) is most widely used in decision making because of its intuitive membership functions and computational simplicity (Erturul and Karakaolu, 2007; Lima et al., 2014). In this study, TFNs are adopted in both of the fuzzy technique for order preference by similarity to ideal solution (TOPSIS) methods. TFN can be defined as a triplet  $(l, m, u)$ . The parameters  $l, m$  and  $u$ , respectively, specify the smallest possible value, the peak value and the largest possible value of the membership function.

**2.2 Fuzzy multi-attribute decision making**

Fuzzy multi-attribute decision making (FMADM) has a specific purpose, which can be classified into two types (Simoes-Marques et al., 2000). There are some methods that can be used to solve the problem FMADM as follows (Kusumadewi et al., 2006):

1. Simple Additive Weighting (SAW)
2. Weighted Product (WP)
3. ELECTRE
4. TOPSIS
5. Analytic Hierarchy Process (AHP).

This research utilises fuzzy TOPSIS.

**2.3 Technique for order preference by similarity to ideal solution**

TOPSIS based on the concept that the best alternative was selected not only does it have the shortest distance from the positive ideal solution, but it also has the longest negative ideal solution from the distance (Kusumadewi et al., 2006). In general, TOPSIS procedure is following the steps as follows:

1. make a decision matrix that is normalised.
2. make a decision matrix that is normalised weighted.
3. determine the ideal solution matrix of positive and negative ideal solution matrix.
4. determine the distance between the value of each alternative with the ideal solution matrix positive and negative ideal solution matrix.
5. determining the value of preference for each alternative.

TOPSIS require the rating of performance for each alternative  $A_i$ , on each criterion  $C_j$  that are normalised as

$$r_{ij} = \frac{x_{ij}}{\sqrt{\sum_{i=1}^m x_{ij}^2}}, \quad \text{with } i = 1, 2, \dots, m; \quad j = 1, 2, \dots, n \quad (2)$$

$A^+$  positive ideal solution and negative ideal solution  $A^-$  rating weights can be determined based on the normalised  $(y_{ij})$  :

$$y_{ij} = w_i r_{ij} \quad \text{with } i = 1, 2, \dots, m; j = 1, 2, \dots, n. \tag{3}$$

$$A^+ = (y_1^+, y_2^+, \dots, y_n^+); \tag{4}$$

$$A^- = (y_1^-, y_2^-, \dots, y_n^-); \tag{5}$$

With:

$$y_j^+ = \begin{cases} \max_i y_{ij}; & \text{If } j \text{ is profit attribute} \\ \min_i y_{ij}; & \text{If } j \text{ is fee attribute} \end{cases} \tag{6}$$

$$y_j^- = \begin{cases} \min_i y_{ij}; & \text{If } j \text{ is fee attribute} \\ \max_i y_{ij}; & \text{If } j \text{ is fee attribute} \end{cases} \tag{7}$$

$$j = 1, 2, \dots, n.$$

The distance between the alternative  $A_i$  with a positive ideal solution is formulated as:

$$D_i^+ = \sqrt{\sum_{j=1}^n (y_i^+ - y_{ij})^2}; \quad i = 1, 2, \dots, m \tag{8}$$

The distance between the alternative  $A_i$  with negative ideal solution is formulated as:

$$D_i^- = \sqrt{\sum_{j=1}^n (y_{ij} - y_i^-)^2}; \quad i = 1, 2, \dots, m. \tag{9}$$

Preference value for each alternative ( $V_i$ ) is as follows:

$$V_i = \frac{D_i^-}{D_i^- + D_i^+}; \quad i = 1, 2, \dots, m \tag{10}$$

$V_i$  larger value indicates that the preferred alternative is  $A_i$ .

### 3. Data and methodology

#### 3.1 Data

The data used in this paper is obtained from the students of the Faculty of Information and Communication Technology University of Semarang, in 2013 the student body. Total student data used is 20 data samples taken randomly. The criteria used to determine student achievement is the GPA (C1), essay (C2), achievement/ability underdog (C3), English/foreign language (C4).

#### 3.2 Methodology

The following shows the flowchart in Figure 1, step 1 which determines the criteria, Stage 2 to specify a rating of matches for each criterion, stage 3 forming Fuzzy membership functions for each criterion, stage 4 form a matrix decision (X), stage 5 Determining the weights of preferences (W) to each criterion, stage 6 determines the decision matrix (X) be a weighted normalised decision matrix (R), stage 7 to Determine the distance between the value of each alternative with the ideal solution matrix positive and negative ideal solution, stage 8 determines the preference value for each alternative. The steps undertaken in this study are shown in Figure 1.

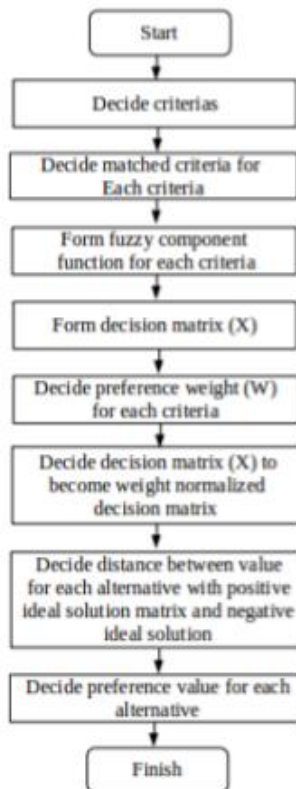


Figure 1. Research flow

**3.2.1 Determining criteria**

Determination of suitability rating criteria of each alternative on the GPA from 0 to 1, can be seen in table 1.

Table 1 Cumulative index grade point average (GPA) value

<i>GPA</i>	<i>Grades</i>
$GPA \leq 2.75$	0
$2.75 < X \leq 3.00$	0.25
$3.00 < X \leq 3.25$	0.5
$3.25 < X \leq 3.50$	0.75
$GPA > 3.50$	1

Determination of suitability rating of each alternative on the criteria of research value from 0 to 1, can be seen in table 2.

Table 2 Weight of the value of research

<i>Research grade</i>	<i>Grade</i>
Grade $\leq 50$	0
$60 < X \leq 70$	0.25
$70 < X \leq 80$	0.5
$80 < X \leq 90$	0.75
Grade $> 90$	1

Determination of suitability rating criteria of each alternative on achievement scores from 0 to 1, it can be seen in table 3.

Table 3 Weight value of achievement

<i>Achievement score</i>	<i>Grades</i>
Score $\leq 50$	0
$60 < X \leq 70$	0.25
$70 < X \leq 80$	0.5
$80 < X \leq 90$	0.75
Score $> 90$	1

Determination of suitability rating criteria of each alternative on English language proficiency score from 0 to 1, looks like Table 4.

Table 4 Weight of English language proficiency score

<i>English proficiency score</i>	<i>Grades</i>
Score $\leq 50$	0
$60 < X \leq 70$	0.25
$70 < X \leq 80$	0.5
$80 < X \leq 90$	0.75
Score $> 90$	1

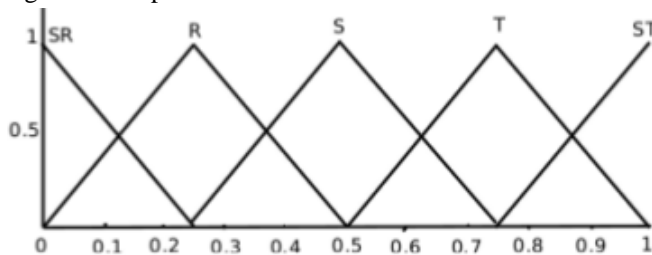
**3.2.2 Constructing the fuzzy membership function**

Each criterion is then made variable. Predefined variables will be converted into fuzzy numbers. Fuzzy numbers formed are:

1. very low (SR) = 0
2. low (R) = 0:25
3. medium (M) = 0.5
4. height (T) = 0.75
5. very high (ST) = 1

Figure 2 shows the membership function of each criterion:

Figure 2 Component function of each criteria



**4. Result of student outstanding achievement selection**

The following alternatives outstanding students unrated the tabulated suitability of each criterion are presented in table 5.

Table 5 Rating suitability of each alternative on each criterion

Name	Criteria			
	C1	C2	C3	C4
Student A	0.5	0.5	0.5	0.5
Student B	0.5	0.25	0.5	0.5
Student C	0.75	0.25	0.5	0.75
Student D	0.5	1	0.75	0.75
Student E	0.75	0.5	0.5	0.25
...	...	...	...	...
Student T	0.75	0.5	0.5	0.5

**4.1 Decision matrix forming (X)**

Decision matrix formed in accordance with the table matches and fuzzy set membership functions. The following data is taken randomly from all the data available alternatives:

$$\text{Matrix } X = \begin{vmatrix} 0.5 & 0.5 & 0.5 & 0.5 \\ 0.5 & 0.25 & 0.5 & 0.5 \\ 0.75 & 0.25 & 0.5 & 0.75 \\ 0.5 & 1 & 0.75 & 0.75 \\ 0.75 & 0.5 & 0.5 & 0.25 \\ 0.75 & 0.5 & 0.5 & 0.5 \end{vmatrix}$$

**4.2 Determining the weight of preference (W) for each criteria**

Preference weights determined according to the decision makers, namely:

1. GPA (C1) = 0.5
2. essay (C2) = 1
3. achievement/capabilities are seeded (C3) = 0.75
4. English/foreign language (C4) = 0.5

The weight vector (W) = [0.5 1 0.75 0.5]

**4.3 Conducting decision matrix normalisation (X)**

Decision matrix is normalised into normalised matrix (R). Here are the results for data normalisation outstanding students selected, based on equation (2):

$$R = \begin{vmatrix} 0.4264 & 0.0006 & 0.6396 & 0.6396 \\ 0.6396 & 0.0006 & 0.0006 & 0.6396 \\ 0.4264 & 0.4264 & 0.4264 & 0.4264 \\ 0.2132 & 0.4264 & 0.4264 & 0.4264 \end{vmatrix}$$

**4.4 Perform ranking process (V)**

Ranking process conducted by equation (8), the resulting ranking process is as follows:

$$V1 = \frac{0.398843}{0.398843 + 0.049751} = 0.889094$$

$$V2 = \frac{0.359995}{0.359995 + 0.097377} = 0.787094$$

$$V3 = \frac{0.232221}{0.232221 + 0.201760} = 0.535095$$

$$V4 = \frac{0.233298}{0.233298 + 0.239005} = 0.493959$$

$$V5 = \frac{0.293967}{0.293967 + 0.421333} = 0.410970$$

The results of ranking the best students of all data that is then sorted by the largest value, is as in Table 6.

Table 6 Result of ranking the best students

Name	C1	C2	C3	C4	Score
Student I	0.75	1	1	0.75	0.889094
Student D	0.5	1	0.75	0.75	0.787094
Student F	0.5	0.75	0.5	0.5	0.535095
Student O	0.5	0.5	1	0.5	0.493959
Student R	0.5	0.75	0.75	1	0.410970

**5. Conclusions**

Based on the results of the stages in this study, it can be concluded. The criteria for the best students they can be presented into fuzzy MADM by using fuzzy TOPSIS for selection of outstanding students, student I have numbered the first achievement to get the value of 0.889094, student D achievement serial number both get the value 0.787094, student F has a serial number of achievements third gain value of 0.535095, students O have numbered the fourth achievement scores of students 0.43959 and R have the serial number of the fifth achievement scores 0.410970 model of decision making in determining student achievement by using FMADM with TOPSIS method can give accurate results.

**References**

1. Ashraf, Q.M., Habaebi, M.H. and Islam, M.R. (2016) ‘TOPSIS-based service arbitration for autonomic internet of things’, IEEE Access, Vol. 4, pp.1313–1320.
2. Bahiraei, N., Panjehfouladgaran, H. and Yusuff, R.M. (2015) ‘Ranking of critical success factors inverse logistics by TOPSIS’, International Conference on Industrial Engineering and Operations Management (IEOM), Dubai, pp.1–5.
3. Behzadian, M., Khanmohammadi Otaghsara, S., Yazdani, M. and Ignatius, J. (2012) ‘A state-of-the-art survey of TOPSIS applications’, Expert Syst. Appl., December, Vol. 39, No. 17, pp.13051–13069.
4. Erturul, R. and Karakaolu, N. (2007) ‘Comparison of fuzzy AHP and fuzzy TOPSIS methods for facility location selection’, Int. J. Adv. Manuf. Technol., October, Vol. 39, pp.783–795.



5. Gong, A., Hu, C. and Gao, H. (2013) 'An enhanced TOPSIS method based on equality constrained optimization', Ninth International Conference on Natural Computation (ICNC), Shenyang, pp.889–893.
6. Kusumadewi, S. (2006) Fuzzy Multi-Attribute Decision Making (FUZZY MADM), Graha Ilmu, Yogyakarta.
7. Kusumadewi, S. and Purnomo, H. (2010) Aplikasi Logika Fuzzy untuk Pendukung Keputusan, Graha Ilmu, Yogyakarta.
8. Kusumadewi, S., Hartati, S., Harjoko, A. and Wardoyo, R. (2006) Fuzzy Multi-Attribute Decision Making (FUZZY MADM), Graha Ilmu, Yogyakarta.
9. Lima Junior, F.R., Osiro, L. and Carpinetti, L.C.R. (2014) 'A comparison between fuzzy AHP and fuzzy TOPSIS methods to supplier selection', Appl. Soft Comput., August, Vol. 21, pp.194–209.
10. Mohyeddin, M.A. and Gharaei, H. (2014) 'FAHP-TOPSIS risks ranking models in ISMS', 7th International Symposium on Telecommunications (IST), Tehran, pp.879–882.
11. Risetdikti (2017) Pedoman Pemilihan Mahasiswa Berprestasi (Pilmapres) Program Sarjana, Jakarta
12. Simoes-Marques, M., Ribeiro, R., dan Gamiero Marques, A.(2000) 'A fuzzy decision support system for equipment repair under battle conditions', Fuzzy Sets and Systems, Vol. 115, pp.141–157.
13. Wang, Y. and Ji, W. (2014) 'Supermarket food safety evaluation based on topsis method', Enterprise Systems Conference (ES), Shanghai, pp.19–23.
14. Zadeh, L. (1965) 'Fuzzy sets', Inf. Control, June, Vol. 8, No. 3, pp.338–353.
15. Zimmermann, H-J. (1992) Fuzzy Set Theory – and its Applications, 13 April, Kluwer Academic Publishers.
16. Vardhana, M., Arunkumar, N., Abdulhay, E, Gustavo Ramirez-Gonzalez., Convolutional neural network for bio-medical image segmentation with hardware acceleration, *Cognitive Systems Research* 50 (2018): 10-14
17. Abdulhay, E., Elamaran, V., Arunkumar, N., V. Venkatraman., Fault-Tolerant Medical Imaging System with Quintuple Modular Redundancy (QMR) Configurations, *J Ambient Intell Human Comput* (2018), <https://doi.org/10.1007/s12652-018-0748-9>
18. Enas Abdulhay, N. Arunkumar, Kumaravelu Narasimhan, Elamaran Vellaippan, V. Venkatraman., Gait and tremor investigation using machine learning techniques for the diagnosis of Parkinson disease, *Future Generation Computer Systems*, <https://doi.org/10.1016/j.future.2018.02.009>
19. Enas Abdulhay., Mazin Abed Mohammed., Dheyaa Ahmed Ibrahim., N. Arunkumar., V. Venkatraman., Computer Aided Solution for Automatic Segmenting and Measurements of Blood Leucocytes Using Static Microscope Images, *Journal of Medical Systems* (2018), <https://doi.org/10.1007/s10916-018-0912-y>
20. Abinaya.S 2G.Arulkumaran DETECTING BLACK HOLE ATTACK USING FUZZY TRUST APPROACH IN MANET International Journal of Innovations in Scientific and Engineering Research (IJISER)



