



UNIVERSITAS BHAYANGKARA JAKARTA RAYA
FAKULTAS ILMU KOMPUTER

Kampus I: Jl. Harsono RM No. 67, Ragunan, Pasar Minggu, Jakarta Selatan 12550
Telepon: (021) 27808121 – 27808882
Kampus II: Jl. Raya Perjuangan, Marga Mulya, Bekasi Utara, Jawa Barat, 17142
Telepon: (021) 88955882, Fax.: (021) 88955871
Web: fasilkom.ubharajaya.ac.id, E-mail: fasilkom@ubharajaya.ac.id

SURAT TUGAS

Nomor: ST/885/X/2022/FASILKOM-UBJ

1. Dasar: Kalender Akademik Ubhara Jaya Tahun Akademik 2022/2023.
2. Dalam rangka mewujudkan Tri Dharma Perguruan Tinggi untuk Dosen di Universitas Bhayangkara Jakarta Raya maka dihimbau untuk melakukan Penelitian.
3. Sehubungan dengan hal tersebut di atas, maka Dekan Fakultas Ilmu Komputer Universitas Bhayangkara Jakarta Raya menugaskan:

NO.	NAMA	NIDN	JABATAN	KETERANGAN
1.	Herlawati, S.Si., M.M., M.Kom.	0311097302	Dosen Tetap Prodi Informatika	Sebagai Penulis Pertama
2.	Prima Dina Atika, S.Kom., M.Kom.	0311037107	Dosen Tetap Prodi Informatika	Sebagai Penulis Kedua

Membuat Artikel Ilmiah dengan judul "**Land Cover Segmentation of Multispectral Images Using Multiresolution Algorithm**" pada media *International Journal of Advanced Research in Computer and Communication Engineering (IJARCCE)*, Vol. 11, Issue 10, Oktober 2022, Hal. 15-20, ISSN (O): 2278 – 1021, ISSN (P): 2319 – 5940.

4. Demikian penugasan ini agar dapat dilaksanakan dengan penuh rasa tanggung jawab.

Jakarta, 21 Oktober 2022
DEKAN FAKULTAS ILMU KOMPUTER

Dr. Dra. Tyastuti Sri Lestari, M.M.
NIP. 1408206



IJARCCCE

ISSN (Online) 2278-1021
ISSN (Print) 2319-5940

International Journal of Advanced Research in Computer and Communication Engineering

A monthly Peer-reviewed journal

Indexed by Google Scholar, Crossref and Mendeley

DOI IJARCCCE/10.17148

www.ijarcce.com

DAFTAR ISI

International Journal of Advanced Research in Computer and Communication Engineering (IJARCCE)

VOLUME 11, ISSUE 10, OCTOBER 2022

Utilizing Generative Adversarial Networks to develop a robust Defensive System against Adversarial Examples

Isaac Tumwine, Justin Nshunguye

Abstract |  PDF | DOI: 10.17148/IJARCCE.2022.111001

Land Cover Segmentation of Multispectral Images Using Multiresolution Algorithm

Herlawati, Prima Dina Aulka, Rehmedya Tries Handayanto

Abstract |  PDF | DOI: 10.17148/IJARCCE.2022.111002

E-Health Web Application Framework and Platform Based on Cloud Technology

Dr. Chethan Chandra S Basavaraddi, Dr. Vasanth G. Sapna S Basavaraddi, Prajwal S U, Nagesh T K, Md Sufiyan, Pavan H R

Abstract |  PDF | DOI: 10.17148/IJARCCE.2022.111003

Bresenham's Line Drawing Algorithm

Mrs. Pournima Abhishek Kamble, Mrs. Sujata Shankar Gawade

Abstract |  PDF | DOI: 10.17148/IJARCCE.2022.111004

IMPLEMENTATION OF ROVER WITH FIELD PROTECTION AND CROP HEALTH MONITORING SYSTEM AND FLOOR SWEEPING SYSTEM

D Ravankumar, Roopa S, Pradeep Kumar V H, HJ Jambukesh

Abstract |  PDF | DOI: 10.17148/IJARCCE.2022.111005

A STUDY ON UML DIAGRAMS FOR TOURIST PLACE REVIEW SENTIMENT ANALYSIS CLASSIFICATION USING MACHINE LEARNING

Bomimagani Ramesh, Dr. G.N.R. Prasad

Abstract |  PDF | DOI: 10.17148/IJARCCE.2022.111006

Singly Linked List

Prof. Shobhane Gaikwad, Prof. Suvarna Nimkarde

Abstract |  PDF | DOI: 10.17148/IJARCCE.2022.111007

Securing IoT and NN-based Control Systems Using AI Managed Cybersecurity Techniques in Heavy Industries-A review

Smrutirekha Panda

Abstract |  PDF | DOI: 10.17148/IJARCCE.2022.111008

SURVEY on COLLEGE MANAGEMENT SOFTWARE

Sakshi Benake, Khadidzehra Charoliya, Vaishnavi Chavan, Pooja Hajare

Abstract |  PDF | DOI: 10.17148/IJARCCE.2022.111009

A Review on Emotion Recognition by Textual Tweets

B.Prasanna Kumar, T.Bhavani Shanvitha, S.Jyothi Sri, Y.Prathyusha, S.Keerthana

Abstract |  PDF | DOI: 10.17148/IJARCCE.2022.111010

Detection of Leukemia by Convolutional Neural Network

Autade Gayatri Shivdas, Bobade Vivek Anil, Kanawade Satyam Pravin, Sanap Dipali Dinkar, Prof. Sharad M. Rokade (Guide)

Abstract |  PDF | DOI: 10.17148/IJARCCE.2022.111011

Simulation and Analysis of Symmetric Diplexer for 5G Applications

Sahil Kumar and Ritika

Abstract |  PDF | DOI: 10.17148/IJARCCE.2022.111012

Congestion Control Dynamic Queue Management Multipath Routing in MANET

Priya Shrivastava

Abstract |  PDF | DOI: 10.17148/IJARCCE.2022.111013

Editorial Board Members

Executive Advisory Board	Reviewers Board
<p data-bbox="252 412 651 439">Professor Subramaniam Ganesan</p> <p data-bbox="252 474 1311 501">Department of Electrical and Computer Engineering, Oakland University, Rochester MI 48309, USA.</p> <p data-bbox="252 555 434 582">Dr. Le Quan Ha</p> <p data-bbox="252 618 1270 680">School of Electronics, Electrical Engineering and Computer Science, Queen's University Belfast, Belfast, UK.</p> <p data-bbox="252 734 427 761">Xiang-Fang Yu</p> <p data-bbox="252 797 880 824">University of Chinese Academy of Sciences, Beijing, China.</p> <p data-bbox="252 878 536 904">Dr. Randy R. Koon Koon</p> <p data-bbox="252 940 1165 967">Faculty of Science & Technology, University of the West Indies, Jamaica, West Indies.</p>	<p data-bbox="236 1021 421 1048">Radi Romansky</p> <p data-bbox="236 1084 1340 1146">Department of Electronics, Computer Systems and Technologies, College of Energy and Electronics at Technical University of Sofia, Sofia, Bulgaria.</p> <p data-bbox="236 1200 491 1227">John Joel F. Martinez</p> <p data-bbox="236 1263 1270 1326">College of Engineering and Architecture –Electronics Engineering, Technological Institute of the Philippines, Quezon City, Philippines.</p> <p data-bbox="236 1379 408 1406">Jeong Phil Lee</p> <p data-bbox="236 1442 1289 1469">Subdivision of New & Renewable Electricity, Kyungnam College of Inform. & Tech., Busan, Korea.</p> <p data-bbox="236 1523 453 1550">Yaremenko Artem</p> <p data-bbox="236 1585 1311 1648">Power Supply Department, National Technical University of Ukraine "Igor Sikorsky Kyiv Polytechnic Institute", Kiev, Ukraine.</p>

Marleen Huysman

Department of Information Systems, Logistics and Innovation, Vrije Universiteit Amsterdam, De Boelelaan, Amsterdam, The Netherlands.

Ivelisse Teresa Machín Torres

Professor, Technical Department, José Martí University, Sancti Spiritus, Cuba.

E. Marquez

Departamento de Física de la Materia Condensada, Facultad de Ciencias, Universidad de Cadiz, Cadiz, Spain.

Ljiljana Ivanković

University of Applied Sciences Velika Gorica, Velika Gorica, Croatia.

Georgios Konstantinou

Special Scientist FOSS Research Centre for Sustainable Energy, PV Technology, University of Cyprus, Nicosia, Cyprus.

Đỗ Đình Thanh

Faculty of Information Technology, Ho Chi Minh University of Foreign Languages and Information Technology (HUFLIT), Vietnam.

Vinod A Prasad

Associate Professor, School of Computer Science and Engineering, Nanyang Technological University (NTU) Singapore.

Myo Myint Maw

Lecturer, Department of Computer Engineering and Information Technology, Mandalay Technological University, Mandalay, Myanmar.

Michael Kimwele

Dr., School of Computing & Information Technology, Jomo Kenyatta University of Agriculture & Technology, Nairobi, Kenya.

Jose A. Noh

Facultad de Matemáticas, Universidad Autónoma de Yucatán, Tizimín, México.

Indrasen Poola

Data Scientist & Artificial Intelligence – Industry Consultant, California, USA.

Prof. Hsiu-fei Sophie Lee

Department of Special Education, National Taitung University, Taiwan.

Dr. G.Sadashivappa

Dept of Telecommunication Engineering, R.V.College of Engineering, Bangalore.

Dr. Redahegn Sileshi

University of North Georgia, Oakwood, Georgia, USA.

Dr. Adnan Al-Rabea

Department of Information Technology, Albalqa Applied University, Salt, Jordan.

Dr. Adrian Nicolae Branga

Department of Mathematics and Informatics, Lucian Blaga University of Sibiu, Romania.

Dr. Magdy Shayboub A. Mahmoud

Faculty of Computers and Informatics, Suez Canal University, Egypt.

Kinnal Dhameliya

Electronics Engineer, Innovative electronics Corp. 750 Trumbull Drive Pittsburgh.

Dr. Ali El-Moursy

Department of Electrical & Computer Engineering, University of Sharjah, United Arab Emirates.

Dr. Aeizaa Azman Abdul Wahab

School of Electrical & Electronic Engineering, Universiti Sains Malaysia (USM), Malaysia.

Mohammad Houssein Ghosn

Professor, Lebanese International University, Department of Computer Science, Beirut, Lebanon.

Dr. Tolga ENSARİ

Computer Engineering, Istanbul University, Istanbul, Turkey.

Dr. Mohd Fadzli Mohd Salleh

School of Electrical & Electronic Engineering, Universiti Sains Malaysia, Malaysia.

Dr. Mohd Fadzli Mohd Salleh

School of Electrical & Electronic Engineering, Universiti Sains Malaysia, Malaysia.

Dr. Mohamed Abd El-Basset Matwalli

Faculty of Computers and Informatics, Zagazig University, Egypt.

Dr. Aeizaa Azman Abdul Wahab

Faculty of Computers and Informatics, Zagazig University, Egypt

Dean M Aslam, Ph.D., Professor

Professor & Member of National Academy of Inventors (NAI),
Director of BIOMEMS and Mind Laboratory, Electrical and Computer Engineering,
Michigan State University, East Lansing, MI 48824 USA.

Prof. Dr.Ushaa Eswaran, B.E., M.E.,PhD.,

Professor & Dean, Department of ECE, Infant Jesus College of Engineering, Keela Vallanadu, Tamil Nadu, India.

S.A. Edalatpanah

Department of Applied Mathematics, Islamic Azad University of Lahijan, Iran.

Timucin BARDAK, Ph.D.,

Bartın Vocational School, Bartın University, Bartın – Turkey.

Karunya University, Coimbatore.

Wenzhu Yang

Professor, School of Cyber Security and Computer, Hebei University, Baoding, China.

Dr Jayanti goyal

Head, Computer Department, Kanoria Girls PG College Jaipur, Rajasthan.

Michael Kimwele

Dr., School of Computing & Information Technology, Jomo Kenyatta University of Agriculture & Technology, Nairobi, Kenya.

Dr. Elsanosy M. Elamin

Dept. of Electrical Engineering, Faculty of Engineering, University of Kordofan, Sudan.

Dr.Dhirendra Sharma

Chief Information Security Officer (CISO), Sr. Faculty IT, UIIT Himachal Pradesh University, Shimla.

Professor Deepika D Pai

Department of Electronics and Communication, Vemana Institute of Technology, Koramangala, Bangalore.

Georgi Tsochev

Faculty of Computer Systems and Technology, Technical University of Sofia, Sofia, Bulgaria .

Dr. Jitesh Neve

Computer Science and Engineering, University of Swahili, Republic of Panama
Module Lead, Persistent System Limited, Pune.

W. A. Muse

Obafemi Awolowo University, Ile-Ife, Nigeria.

Prof.(Dr.) Vijay Singh Rathore

Department of Computer Science,S.R.R.Govt.Arts & Science College, Karimnagar, Telangana.

Janani.B

Professor, Department of CSE, Adithya Institute of Technology, Coimbatore.

Dr.S.Nagaprasad

Professor & Head, CSE, JECRC, Jaipur Engineering College & Research Centre, Jaipur.

Sile Wang

Lecturer, School of Cyber Security and Computer, Hebei University, Baoding, China.

Shearyl U. Arenas

College of Engineering and Architecture – Electronics Engineering, Technological Institute of the Philippines, Quezon City, Philippines.

Dr. S.Rakoth Kandan, M.Tech., Ph.D.,

Professor, Department of CSE, Jayamukhi Institute of Technological Sciences, Warangal, Telangana.

Slavcho Chungurski

Associate Professor, UTMS University, Skopje, Macedonia
Information Security Management Expert, Cabinet of Deputy Prime Minister of the Republic of Macedonia.

Dr D.Durga Prasad, Ph.D.,

Professor, Dept of CSE, PSCMR College of Engg., & Tech, Vijayawada

Dr Mohd Uruj Jaleel

Assistant Professor, College of Computing & Informatics, Saudi Electronic University, Riyadh (KSA)

Mr. R.D.Sivakumar

Assistant Professor, Department of Computer Science, Ayya Nadar Janaki Ammal College, Sivakasi

Dr. Shahzad Ashraf

Assistant Professor, Hohai University Changzhou, China

Dr. Jayeshkumar Natwarlal Modi

Assistant Professor, Computer Science, HNG University, Patan



Land Cover Segmentation of Multispectral Images Using Multiresolution Algorithm

Herlawati¹, Prima Dina Atika², Rahmadya Trias Handayanto³

Faculty of Computer Science, Universitas Bhayangkara Jakarta Raya, Jakarta, Indonesia^{1,2}

Computer Engineering Department, Universitas Islam 45, Bekasi, Indonesia³

Abstract: Semantic segmentation is needed by regional planners to know the composition of land cover in their area, so that they can take the right policy. Several methods from manual to automatic have been researched, both based on colour and pattern. Each method has their strong and weakness, so it is necessary to make the right choice when applying the method. Currently, multispectral imagery is still very rarely used, even though sources of information from the internet are easy to find, i.e. Landsat imagery from the United States Geological Survey. This study uses two methods for segmenting three-channel multispectral images (red, green, and blue), namely iterative self-organizing clustering (ISOCLUST), which is based on a colour sensor, and a multiresolution algorithm, which is based on colour and pattern. For the experiment, the pre-processed satellite image of Karawang district was segmented using the ISOCLUST as well as multiresolution algorithm. The experimental results show that land cover segmentation with multiresolution algorithm is better than ISOCLUST for RGB but for more than three channels, i.e., seven frequency channels, ISOCLUST shows better performance compared to real image conditions.

Keywords: Satellite Imagery, Multispectral, ISOCLUST, Multiresolution

I. INTRODUCTION

In the Geographic Information System (GIS) there are two land use maps, namely land use and land cover. Land cover describes how a land is covered by a biophysical environment such as buildings, trees, water, and the like, while land use describes how human socio-economic activities on land such as housing, business, industry, schools and the like [3]. A land cover, for example a building, in a land use can be residential, industrial, or business.

For land cover, the term classification is usually given the term segmentation. Moreover, in the computer science literature a similar term to classification and segmentation is object detection. In the segmentation process, each pixel of the satellite image will be segmented into several categories such as buildings, vegetation, waters, and other types of land cover.

Currently, the main source of land cover data is imagery derived from remote sensing such as satellites, drones, unmanned aerial vehicles (UAVs). Image processing is needed to produce a raw image into a segmented image. There are two types of processing involved: colour pixel based and object/pattern based [2], [3].

Initially, the map was made by direct survey to the area. However, since the development of remote sensing, most maps are drawn using satellite imagery. Applications that are currently developing such as Google Map, WAZE, among others, use Global Positioning Service (GPS) on smartphones connected to these applications. These applications work using existing techniques and methods in the field of Geographic Information Systems (GIS). In other words, remote sensing captures images and represents them with GIS tools. [4].

Digital image processing is needed in managing satellite capture from remote sensing. Satellite images have hyperspectral characteristics, namely one image capture has a number of frequency bands, for example Sentinel-2, and Landsat-9 images have 13 frequency bands [5]. Several remote sensing applications are available that are capable of classifying based on colour differences from satellite imagery. The application works well for land cover but is not able to distinguish buildings that have a specific use (land use), whether settlements, factories, roads, terminals, airports, and others. Dyna-Clue and Idrisi/TerrSet are applications that are often used in land cover classification. Other applications then emerged to perform pattern/object-based land cover segmentation known as Object-Based Image Analysis (OBIA), such as eCognition. For example, OBIA can distinguish between a river and a lake, although they are both water because they have different object shapes.



II. DATA AND METHODS

Satellite images are raster-type spatial data taken from sensor captures on satellites (Landsat, Sentinel, IKONOS, SPOT, and others). On a regular basis, every few days, the satellite records the catch and sends the data back to earth. The sensors provided vary, ranging from high to medium resolution. In addition, each catch produces several frequency channels that are useful for certain land cover types. to process the necessary tools in the form of GIS tools and spatial analysis tools. This research uses ArcMap as GIS tools, IDRISI Selva and eCognition as segmentation tools.

A. Data

Figure 1 shows the study area. It located in latitude and longitude of 107.3375791 and -6.3227303, respectively. Located in the east of Bekasi regency, and the west of Subang. Satellite images of Karawang district can be obtained by downloading via the official website of the United States Geological Survey (USGS). Furthermore, the image with a resolution of 30 meters is ready to be downloaded. Figure 1 also shows the clipping result from Landsat image in one tile following the study area. One tile contains some regencies/cities. We actually can see the vegetation, urban, and wetland areas through the satellite imagery, in this study we use two segmentation method that can segment the satellite image into some land cover classes.

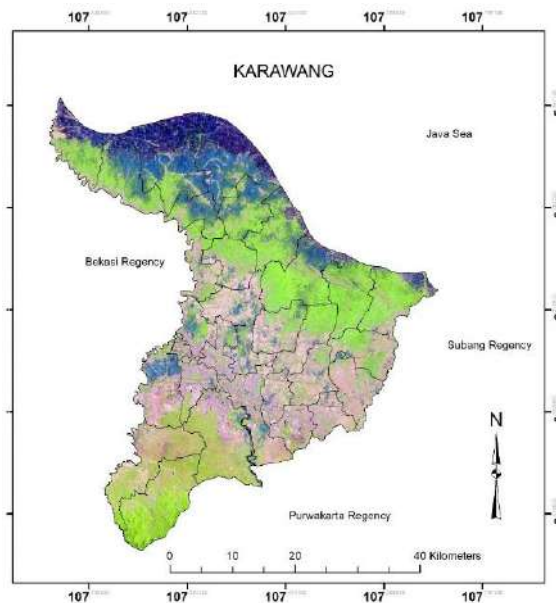


Fig. 1 Bekasi, West Java, Indonesia

The available frequency channels are channels 1 to 13 with details of channel 1 being for the coastal area, channels 2, 3 and 4 are for blue (blue), green (green), and red (red) images, respectively. Furthermore, the channels above 5 (near infrared) are infrared channels [9]–[11]. The combination of these channels is known as composite band with the well-known composite channel is Red-Green-Blue (RGB) which is a combination of 4, 3, and 2 channels. RGB channel is a visible (natural color) channel where almost Most cameras used to capture images produce this RGB channel. Other composite channels are Infrared (channels 5,4, and 3) for vegetation detection, Urban Areas (channels 7,4, and 2), agriculture (channels 5,4, and 3), and others as needed [12], [13].

Table 1 shows the information of the downloaded satellite imagery. There are 11 bands in the downloaded data after decompressing. IDRISI 19.3 was used to import these datasets. One true colour for each date was also downloaded and imported to help in re-classification using RECLASS function.

TABLE 1. LANDSAT SATELLITE IMAGERY

No.	Date	Sensor
1.	15 August 2021	Landsat 8 OLI/TIRS



After downloading the satellite image, it is necessary to do pre-processing such as clipping and conversion according to the application format, for example from raster to ASCII. Geographic Information System (GIS) software is required to perform the cutting process according to the research area (Karawang district) with certain functions (in ArcGIS with the 'raster clip' function). Besides ArcGIS, other software that will be used is E-Cognition. This application has tools that can be used for the land cover classification/segmentation process. After the satellite image is cropped according to the research area, the E-Cognition software imports the Red-Green-Blue (RGB) image from ArcGIS.

B. Methods

Multi-resolution algorithm is a segmentation algorithm that combines pixel-based processing with object characteristics/patterns. This algorithm is an improvement from the pixel-based algorithm because certain conditions require a combination of high resolution focusing on pixels with low resolution based on a wider object/pattern.

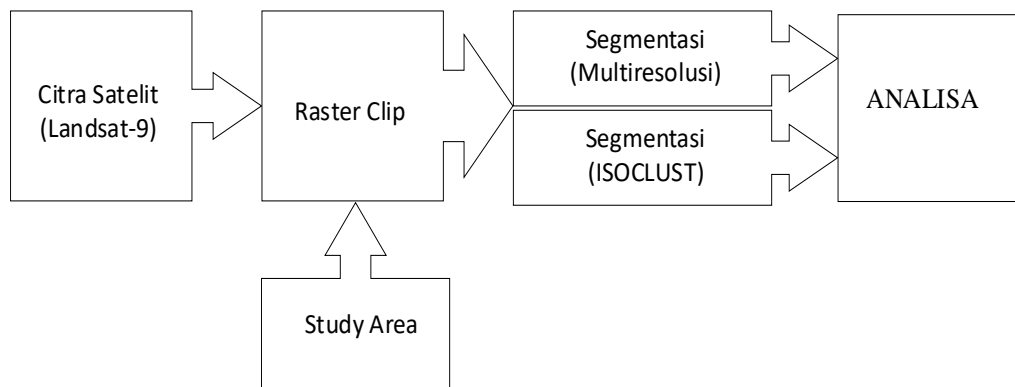


Fig. 2 Segmentation Process

Figure 2 shows the research flow. The satellite image is cropped based on the study area, namely Karawang district. Two methods are used for segmentation followed by analysis of the results. In addition to RGB images, this study also compares the results of eCognition segmentation with multispectral images with seven frequency channels.

As a comparison, another software, namely IDRISI/TerrSet will be used with the Iterative Self-Organizing Clustering (ISOCLUST) function which is one of the Hard Clustering methods. Both ISOCLUST and Multiresolution still require a manual guiding process so they are said to be semi-automatic. Although semi-automatic, the results of the two methods are quite accurate and sometimes become ground truth data in calculating the accuracy of Deep Learning/Machine Learning models.

Currently, the latest research on satellite image processing is multispectral and hyperspectral imagery [14], [15]. Although it has a low resolution (30 meters) but Landsat has been widely used by geospatial researchers, especially in analyzing land use and cover changes. In other words, the state of the art research is on the side of multispectral image processing and the application of pattern/object-based segmentation with multiresolution algorithms [16].

III. RESULT AND DISCUSSION

This study uses several supporting tools, including ArcMap version 10.1 as a Geographic Information System (GIS) tool and eCognition version 9 as a semantic segmentation tool. As a comparison, Idrisi Selva version 17 is also used.

A. Iterative Self Organizing Clustering (ISOCLUST)

This built-in method inside IDRISI Selva applies hard clustering with iterative self-organizing clustering (ISOCLUST) method. This method is very good for creating satellite image segments with multiple frequency channels (up to seven channels). These frequency channels have their own characteristics, for example, specifically for vegetation, buildings, infrared and high resolution. Figure 3 shows the results of segmentation with ISOCLUST.

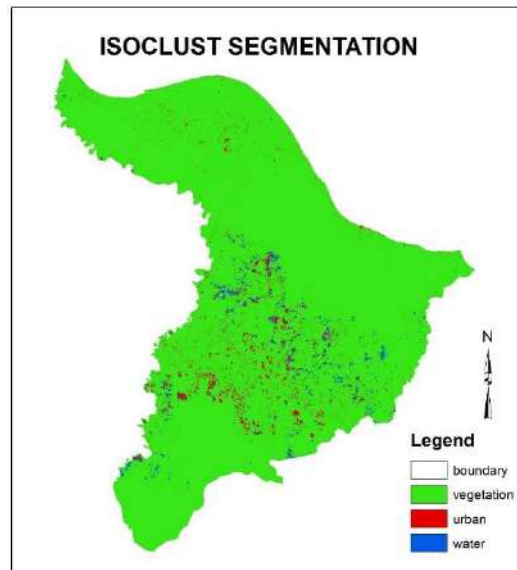


Figure 3. Results of RGB Image Segmentation with ISOCLUST

B. Importing to IDRISI

Geo-TIFF data should be converted into RST file in IDRISI using importing window. Geo-TIFF is a file TIFF with proper geospatial information, i.e. geographic coordinate and projection. The default projection from USGS for the study area, Bekasi, West Java, Indonesia is UTM 48N. There are 11 RST files after import process.

C. Multiresolution Segmentation

The multiresolution segmentation method combines colour features with patterns. By combining colour features with patterns, it is believed that this method can produce better segmentation accuracy. One of the applications used for multiresolution segmentation is eCognition. In this study, eCognition version 9. was used. Figure 4 shows the results of segmentation using the multi-resolution method.

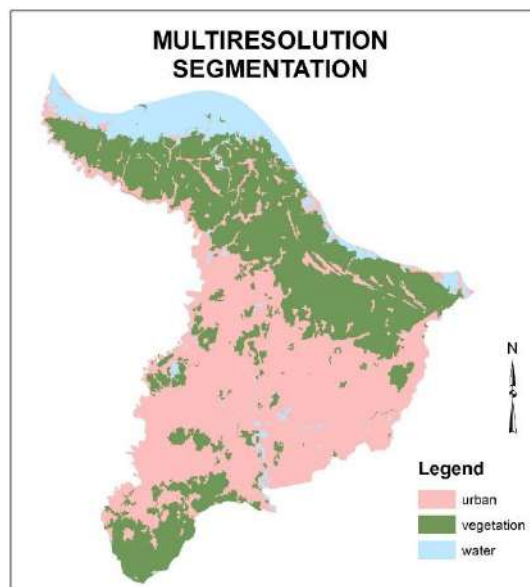


Figure 4. Results of RGB Image Segmentation with Multiresolution Method

The segmentation results show that eCognition produces vector-based classification while ISOCLUST is in the form of raster data. Each data has strengths and weaknesses. Vector data has a smaller number of memory bytes than raster data.



Vector data is preferred by web-based GIS tools while raster data is easier to process further, for example for land cover change analysis.

For RGB images, the multiresolution algorithm has better results than ISOCLUST after the adjustment process on eCognition has previously produced worse results than ISOCLUST Idrisi Selva. Figure 5 shows segmentation with ISOCLUST on Idrisi Selva for seven frequency channels.

D. Discussion

For the same number of channels, eCognition showed better result because the multiresolution algorithms not only consider colour but also the pattern. The use of mean and standard deviation adds the clustering process more accurate, especially for the satellite with 30-meter resolution. For small number of channels, the use of high resolution image should be prepared using Unmanned Aerial View (UAV).

IV. CONCLUSION

The results of the study show differences in the characteristics of semantic segmentation between multi-resolution algorithms and Iterative Self Organizing Clustering (ISOCLUST). For multispectral images with less than three channels, e.g., red-green-blue (RGB) images are more suitable for resolution algorithms. Meanwhile, the multispectral image with the right number of more than three is more suitable with ISOCLUST which focuses on the color sensor type from the Landsat satellite. For segmentation RGB images are more suitable with the multi-resolution algorithm, while images with seven channels use ISOCLUST. Further research needs to apply deep learning methods to perform the semantic segmentation process automatically so that the process is faster and does not require user spatial analysis skills such as eCognition and Idrisi Selva.

ACKNOWLEDGMENT

The authors thank to Universitas Bhayangkara Jakarta Raya in supporting this research as internal research grant. Also, for the reviewers who have given the insightful comments.

REFERENCES

- [1] UN, "Habitat III Issue Papers - Public Space," in *United Nation Conference on Housing and Sustainable Urban Development*, 2015.
- [2] F. Steiner, "The living landscape - An Ecological Approach to Landscape Planning - Second Edition," Washington DC: ISLAND PRESS, 2008.
- [3] H. Geist, W. McConnell, E. F. Lambin, E. Moran, D. Alves, and T. Rudel, *Land-Use and Land-Cover Change Local Processes and Global Impacts*. 2006.
- [4] L. Rahayu, S. Subiyanto, and B. Yuwono, "Kajian Pemanfaatan Data Penginderaan Jauh Untuk Identifikasi Objek Pajak Bumi Dan Bangunan (Studi Kasus : Kecamatan Tembalang Kota Semarang)," *J. Geod. Undip*, vol. 4, no. 1, pp. 20–31, 2015.
- [5] S. S. Bhatti, N. K. Tripathi, V. Nitivattananon, I. A. Rana, and C. Mozumder, "A multi-scale modeling approach for simulating urbanization in a metropolitan region," *Habitat Int.*, vol. 50, pp. 354–365, 2015.
- [6] S.-H. Lee, K.-J. Han, K. Lee, K.-J. Lee, K.-Y. Oh, and M.-J. Lee, "Classification of landscape affected by deforestation using high-resolution remote sensing data and deep-learning techniques," *Remote Sens.*, vol. 12, no. 20, pp. 1–16, 2020.
- [7] E. A. Alshari and B. W. Gawali, "Development of classification system for LULC using remote sensing and GIS," *Glob. Transitions Proc.*, vol. 2, no. 1, pp. 8–17, 2021.
- [8] J. Eastman, "IDRISI selva tutorial. Idrisi production. Clark Labs-Clark Universit," 2012. [Online]. Available: <https://clarklabs.org/wp-content/uploads/2016/10/TerrSet-Tutorial.pdf>. [Accessed: 18-May-2019].
- [9] Y. Chen, Z. Lin, Y. Chen, Z. Lin, X. Zhao, and S. Member, "Deep Learning-Based Classification of Deep Learning-Based Classification of Hyperspectral Data," vol. 7, no. June 2014, pp. 1–14, 2014.
- [10] G. Rousset, M. Despinoy, and K. Schindler, "Assessment of Deep Learning Techniques for Land Use Land Cover Classification in Southern New Caledonia," *Remote Sens.*, vol. 13, no. 2257, pp. 1–22, 2021.
- [11] W. Zhao, S. Du, and W. J. Emery, "Object-Based Convolutional Neural Network for High-Resolution Imagery Classification," *IEEE J. Sel. Top. Appl. Earth Obs. Remote Sens.*, vol. 10, no. 7, pp. 3386–3396, 2017.
- [12] X. Zhang, G. Chen, W. Wang, Q. Wang, and F. Dai, "Object-Based Land-Cover Supervised Classification for Very-High-Resolution UAV Images Using Stacked Denoising Autoencoders," *IEEE J. Sel. Top. Appl. Earth Obs. Remote Sens.*, vol. 10, no. 7, pp. 3373–3385, 2017.



- [13] A. Sharma, X. Liu, X. Yang, and D. Shi, "A patch-based convolutional neural network for remote sensing image classification," *Neural Networks*, vol. 95, pp. 19–28, 2017.
- [14] S. K. Ojha, N. S. V. Yarlalagadda, K. Challa, B. L. N. P. Kumar, and M. K. Vemuri, "Land Use Prediction On Satellite images using Deep Neural Nets," in *Proceedings of the International Conference on Intelligent Computing and Control Systems (ICICCS 2019)*, 2019, pp. 999–1003.
- [15] J. R. Bergado, C. Persello, and A. Stein, "LAND USE CLASSIFICATION USING DEEP MULTITASK NETWORKS," *Int. Arch. Photogramm. Remote Sens. Spat. Inf. Sci.*, vol. XLIII, no. April 2016, pp. 17–21, 2020.
- [16] T. T. Sasidhar, K. Sreelakshmi, M. T. Vyshnav, V. Sowmya, and K. P. Soman, "Land Cover Satellite Image Classification Using NDVI and SimpleCNN," in *2019 10th International Conference on Computing, Communication and Networking Technologies (ICCCNT)*, 2019, pp. 1–5.
- [17] Q. Zou, L. Ni, T. Zhang, and Q. Wang, "Remote Sensing Scene Classification," *IEEE Trans. Geosci. Remote Sens. Lett.*, vol. 12, no. 11, pp. 2321–2325, 2015.
- [18] S. Lamine *et al.*, "Quantifying land use/land cover spatio-temporal landscape pattern dynamics from Hyperion using SVMs classifier and FRAGSTATS®," *Geocarto Int.*, vol. 33, no. 8, pp. 862–878, 2018.

BIOGRAPHY



Herlawati earned Magister Management and Magister of Computer Science. She has been published some books and papers in Data Mining, Machine Learning, and Geographic Information Systems. She is also a doctoral student of Computer Science in Universitas Bina Nusantara. She is still active as lecturer at Universitas Bhayangkara Jakarta Raya.



Prima Dina Atika has published some papers about data mining and database. She is now a lecturer of Informatics department in Universitas Bhayangkara Jakarta Raya.



Rahmadya Trias Handayanto has published some papers about Geo-AI. After finishing his PhD in Information Management, he held academic position as head of computer engineering department in Universitas Islam 45 Bekasi. He is still active in reviewing some international journal and writing books.

Land Cover Segmentation of Multispectral Images Using Multiresolution Algorithm

ORIGINALITY REPORT

19%

SIMILARITY INDEX

19%

INTERNET SOURCES

8%

PUBLICATIONS

%

STUDENT PAPERS

PRIMARY SOURCES

1	ijarcce.com Internet Source	15%
2	conferences.tdl.org Internet Source	2%
3	Yassine Himeur, Bhagawat Rimal, Abhishek Tiwary, Abbes Amira. "Using artificial intelligence and data fusion for environmental monitoring: A review and future perspectives", Information Fusion, 2022 Publication	<1%
4	repository.seku.ac.ke Internet Source	<1%
5	orcid.org Internet Source	<1%
6	repository.ju.edu.et Internet Source	<1%
7	www.hindawi.com Internet Source	<1%



International Journal of Advanced Research in Computer and Communication Engineering

ISSN Online 2278-1021
ISSN Print 2319-9540
Since 2012

A monthly peer-reviewed online and print journal

- Home
- About
- Authors
- * Fee
- Reviewers
- Topics
- Peer Review
- Ethics
- Policies
- Indexing
- FAQ's
- Contact

Downloads

- Paper Format
- Copyright
- Check My Paper Status
- Publication Fee

Author Center

Why Publish in IJARCCCE
Benefits to Authors

Indexing

Journal Title: International Journal of Advanced Research in Computer and Communication Engineering (IJARCCCE)

Organization: Tejass Publishers

IJARCCCE is indexed by the following top-ranking and our related sites



Pars Magazine Directory



← → ↻ ijarccce.com/indexing/

Frequency Asked Questions

IJARCCCE Management

- Aims and Scope
- Call for Papers
- Editorial Board
- Publication Ethics
- Subscription
- Librarian
- Conference Special Issue

Archives

- 2022 >
- 2021 >
- 2020 >
- 2019 >
- 2018 >
- 2017 >
- 2016 >
- 2015 >
- 2014 >
- 2013 >
- 2012 >

- PCON-2019
- NCAIT-17
- nCORETech-17
- NCRIC-17
- ICACTRP 2017
- ICITCSA 2017
- NCDSPICE-16
- SITES-16
- ICRITCSA-16
- NCORETECH-16
- ICRTCC

Information

IJARCCCE - Online and Print Version

Indexed by Google Scholar

Dear Professors, Researchers and Scientists, the research articles, ...



Open access



CERTIFICATE OF PUBLICATION

PRIMA DINA ATIKA

Faculty of Computer Science, Universitas Bhayangkara Jakarta Raya, Jakarta, Indonesia

Published a paper entitled

Land Cover Segmentation of Multispectral Images

Using Multiresolution Algorithm

Volume 11, Issue 10, October 2022

DOI: [10.17148/IJARCCCE.2022.111002](https://doi.org/10.17148/IJARCCCE.2022.111002)

Certificate#: IJARCCCE/2022/3-2

CERTIFICATE OF PUBLICATION

HERLAWATI

Faculty of Computer Science, Universitas Bhayangkara Jakarta Raya, Jakarta, Indonesia

Published a paper entitled

Land Cover Segmentation of Multispectral Images

Using Multiresolution Algorithm

Volume 11, Issue 10, October 2022

DOI: [10.17148/IJARCCCE.2022.111002](https://doi.org/10.17148/IJARCCCE.2022.111002)

Certificate#: IJARCCCE/2022/3-1